

**The Gerson Therapy  
for Those Dying of Cancer**

**Seventy years were spent improving a cancer treatment**

**- here it is -**

**by Vance Ferrell**

This book was prepared for cancer patients whose  
doctors have told them they are going to die

**From the *original electronic book*<sup>1</sup>**

---

<sup>1</sup>**Documento:** "... gaia/en/vital/gerson/healcancer/gerson\_therapy\_healing\_cancer.pdf".

# Contents

<b>0</b>	<b>Hope and Caution</b>	<b>1</b>
0.1	The physiology effect of coffee . . . . .	1
0.2	Preface . . . . .	4
0.3	The story of Max Gerson . . . . .	6
0.4	Here is the Gerson formula . . . . .	11
<b>1</b>	<b>Introduction</b>	<b>13</b>
1.1	Four special problems . . . . .	13
1.2	Solving the four problems . . . . .	14
1.3	Better in seven ways . . . . .	15
1.4	Five dangers . . . . .	15
1.5	Why did Gerson succeed? . . . . .	16
1.6	Gerson explains his method . . . . .	17
<b>2</b>	<b>The Basic Therapy</b>	<b>23</b>
2.0.1	How to begin . . . . .	23
2.0.2	Do this first . . . . .	23
2.0.3	Special needs . . . . .	24
2.1	Forbidden foods . . . . .	24
2.1.1	Forbidden non-food substances . . . . .	27
2.2	Foods . . . . .	28
2.2.1	Foods to use . . . . .	28
2.2.2	More on foods to use . . . . .	29
2.2.3	Foods to eat each day . . . . .	30
2.2.4	Sample menu . . . . .	31
2.2.5	Sodium-potassium ratios . . . . .	32
2.2.6	Medications . . . . .	34
2.2.7	Foods temporarily forbidden . . . . .	35
2.3	Food preparation . . . . .	36
2.3.1	Purchase of food . . . . .	36

2.3.2	Kitchen equipment to use . . . . .	36
2.3.3	Kitchen equipment not to use . . . . .	36
2.3.4	Juices . . . . .	37
2.3.5	Preparation of carrot and apple juice . . . . .	38
2.3.6	Norwalk instructions . . . . .	38
2.3.7	Preparation of citrus juices . . . . .	41
2.3.8	Preparation of green leaf juice . . . . .	41
2.3.9	Preparation of cooked vegetables . . . . .	41
2.3.10	Preparation of special soup (Hippocrates' soup) . . . . .	42
2.3.11	Preparation of peppermint tea . . . . .	43
2.3.12	Medications . . . . .	43
2.4	Detoxification . . . . .	45
2.4.1	Physiology of coffee enemas . . . . .	45
2.4.2	Preparing the enema mixture . . . . .	47
2.4.3	Taking the enema . . . . .	48
2.4.4	Taking castor oil by mouth . . . . .	48
2.4.5	Taking castor oil by enema . . . . .	49
2.5	Dealing with pain . . . . .	49
2.5.1	Pain triad . . . . .	49
2.5.2	Castor oil pack for pain . . . . .	50
2.5.3	Hydrotherapy for pain . . . . .	51
2.5.4	Heat above the abdomen for upset intestinal tract . . . . .	51
2.5.5	Chamomile tea enema for upset intestinal tract . . . . .	51
2.5.6	Potassium added to enema water . . . . .	51
2.5.7	Flare-ups and reactions . . . . .	51
2.5.8	Clay poultice . . . . .	52
2.6	Other points . . . . .	52
2.6.1	Green leaf tea enema . . . . .	52
2.6.2	Massage . . . . .	53
2.6.3	The will to live and push through . . . . .	53
2.7	Instructions for giving injections . . . . .	54
2.8	Why do some cancer patients do better after surgery? . . . . .	55
2.9	How to prevent cancer . . . . .	56
<b>3</b>	<b>Schedules and Supplies</b>	<b>57</b>
3.1	Schedules . . . . .	57
3.1.1	Initial house preparation . . . . .	57

3.1.2	Sample enema schedule . . . . .	57
3.1.3	Daily schedule . . . . .	58
3.2	Supplies . . . . .	60
3.2.1	Kitchen supplies . . . . .	60
3.2.2	Three-month's supply . . . . .	63
3.2.3	Gerson supply sources . . . . .	64
3.2.4	Locating organic food . . . . .	65
3.2.5	Lab tests . . . . .	66
3.2.6	Improving your water supply . . . . .	66
3.2.7	Gerson therapy recipes . . . . .	67
<b>4</b>	<b>Non-Cancer Disorders</b>	<b>69</b>
4.1	Other books by this publisher . . . . .	73
4.2	Back cover . . . . .	74

# Chapter 0

## Hope and Caution

This book is only written for those whom the physicians have given up on. It can provide you with information you need as you consult with a Gerson-trained physician at the Gerson Institute.

**Caution: Consult with your physician and do not, without his guidance, attempt self-help therapy. The author and publisher are not responsible for any attempt to do so. This information is provided as an educational tool concerning certain aspects of cancer.**

“The more I treated cancer cases the more the patients and their relatives recognized that something could be accomplished for those advanced cases who had been sent home. Gradually the number of so-called terminal cases among my patients increased to more than 90 per cent of the total, having come to me after the applied treatments had failed. As a result of having attracted such a large number of greatly advanced cases, I was urged to explore the cancer treatment in many directions and to improve it as far as possible. . . .”

Max Gerson, *A Cancer Therapy*, p. 33<sup>1</sup>

“The physician . . . hesitates to take risks for his patients by applying a not-recognized treatment . . . I was in a more favorable position. Ninety to ninety-five percent of my patients were far advanced (terminal) cases without any risk to take; either all recognized treatments had failed or the patients were inoperable from the beginning.”

Max Gerson, *A Cancer Therapy*, p. xiv

“I should like to tell you what we do to prove that this treatment really does work on cancer. Number one, the results. I think I can claim [stated in 1956] that I have, even in these far advanced cases, 50% results.”

Max Gerson, *A Cancer Therapy*, p. 411<sup>2</sup>

### 0.1 The physiology effect of coffee

**Just what does coffee do in the human body?**

---

<sup>1</sup>**Livro:** “A Cancer Therapy - The Cure of Advanced Cancer by Diet Therapy”, **Capítulo 4:** “Development of the Combined Dietary Regime in Cancer (Survey)”, **Parágrafo 7.**

<sup>2</sup>**Livro:** “A Cancer Therapy - The Cure of Advanced Cancer by Diet Therapy”, **Capítulo 34:** “Atualizações: Appendix I, II and III”, **Item 34.2:** “Appendix II: The cure of advanced cancer by diet therapy - Max Gerson”, **Parágrafo 36.**

It is a remarkable fact that, according to the manner in which it is taken, it has two entirely different effects.

If a diluted mixture of coffee is taken in an enema, it opens up the bile ducts so toxic substances can be emptied out of the liver. For about 54 years, Dr. Max Gerson used coffee enemas to do this - and found no other side effects. Instead, he found that diluted coffee enemas would save lives, when nothing else would.

“Where do we begin? *The most important first step is the detoxification*<sup>3</sup>. So let us go into that. First we gave some different enemas. I found out that the best enema is the coffee enema as it was first used by Prof. O.A. Meyer in Goettingen. This idea occurred to him when, together with Prof. Heubner, he gave caffeine solution into the rectum of animals. He observed that the bile ducts were opened and more bile could flow ...”

“... These patients who absorb the big tumor masses [from the tumor into the blood stream into the liver] are awakened with an alarm clock every night because they are otherwise poisoned by the absorption of these masses. If I give them **only** one or two or three enemas, [this will not detoxify enough], they die of poisoning. I did not have the right as a physician to cause the body to absorb all the cancer masses and then not to detoxify enough. With two or three enemas they were not detoxified enough! They went into a *coma hepaticum* (liver coma). Autopsies showed that the liver was poisoned. I learned from these disasters that you can't give these patients too much detoxification [into the bloodstream without take it out of the body with enemas] ... When I didn't give these patients the night enemas, they were drowsy and almost semi-conscious in the morning. The nurses confirmed this and told me that it takes a couple of enemas till they are free of this toxic state again. *I cannot stress the [importance of] detoxification enough*. Even so with all these enemas, this was not enough! I had to also give them castor oil by mouth and by enema every other day, at least for the first week or so. After these two weeks you wouldn't recognize these patients any more! They had arrived on a stretcher, and now they walked around! They had appetite. They gained weight and the tumors went down.”

*Max Gerson, A Cancer Therapy, pp. 407-408.*

**In strong contrast, if a cup of coffee is swallowed, it has entirely different effects - and all of those effects are extremely negative:**

“A cup of coffee taken by mouth has an entirely different effect ... It heightens the reflex response, lowers the blood pressure, increases heart rate, perspiration, causes insomnia and heart palpitation. ...”

*Max Gerson, A Cancer Therapy, p. 191<sup>4</sup>.*

Checking a standard 1,450-page textbook (pp. 374-377 of *Mosby's Pharmacology in Nursing*) which deals with the subject, the effects of drinking coffee or other caffeine products are well-known.

“More frequent side effects include increased nervousness or jittery feelings and irritation of GI tract resulting in nausea. More frequent adverse reactions in neonates abdominal swelling or distension, vomiting, body tremors, tachycardia, jitters, or nervousness.”

*Mosby's Pharmacology in Nursing, p. 375.*

---

<sup>3</sup>**Livro:** “A Cancer Therapy - The Cure of Advanced Cancer by Diet Therapy”, **Capítulo 34:** “Atualizações: Appendix I, II and III”, **Item 34.2:** “Appendix II: The cure of advanced cancer by diet therapy - Max Gerson”, **Parágrafo 26.**

<sup>4</sup>**Livro:** “A Cancer Therapy - The Cure of Advanced Cancer by Diet Therapy”, **Capítulo 25:** “Cancer Diet and its Preparation”, **Item 25.6:** “Enemas”, **Parágrafo 4.**

**It is an intriguing fact that not one of these terrible side effects occurs when a coffee enema is given!** Max Gerson said that “a cup of coffee taken by mouth has an entirely different effect.” That was his observation from about 1925, onward to his death in 1959.

**A diluted coffee enema has one, different, and powerful effect: the strong dilation of the bile ducts. This never occurs when coffee is drunk by mouth.**

**It is clear that drinking coffee by mouth and taking a diluted mixture of it, temporarily into the lower bowel, have totally different effects.**

**Why is this?**

**Here are four reasons why:**

**First, God made the stomach and small intestines to be the normal means of absorbing substances from the food.** This includes carbohydrates, amino acids, fats, and other nutrients.

Apparently, the lower bowel was not designed to absorb substances as well. It does not have the lacteals, found in the small intestine, which absorb nutrients into the blood stream.

**Second, coffee drunk by mouth, passes through the entire gastro-intestinal system.** In contrast, a diluted coffee enema only enters the lower part of the large bowel.

Max Gerson’s consistent practice (continued today by the Gerson Institute and all patients) is never to give high colonics, but only low enemas. The fluid enters and is retained only in the lower bowel.

**Third, coffee, when drunk, remains in the body for up to 5-6 hours, until it is entirely absorbed** by the lacteals and has passed into the blood stream, thence to be carried throughout the body and into every organ, wreaking havoc on the entire system.

But, in accordance with consistent Gerson directives, a diluted coffee enema only remains in the lower bowel 12 to 15 minutes - and then it is expelled.

**Fourth, in order to produce so many different effects, coffee taken by mouth would have to enter the bloodstream.**

Yet it is quite obvious that a diluted coffee enema does not enter the bloodstream - for if it did, it would produce the very same effects - *which it does not*. Instead it produces a single, entirely different effect: the powerful opening of the bile ducts, so poisons stored in the liver can be released.

What is the mechanism by which this occurs?

Max Gerson has stated that the diluted coffee in the enema, instead of actually traveling to the liver in the bloodstream, may only send a signal to it.

The present author suggests that it would have to be the latter. If the coffee entered the blood stream and was carried to the liver - that same coffee would also travel throughout the body and produce all those negative effects which coffee taken by mouth does (heart palpitations, body tremors, etc.).

But since a coffee enema produces none of these bad effects, it must be that coffee only sends a signal, via the nerves, to the liver.

**Thus we are confronted by the fact that coffee enemas apparently are not harmful to the system.** This conclusion may be incorrect. But that is where the observable facts lead us.

**However, let us take this matter one step further:**

**I know any number of people who would never drink a cup of coffee, yet who are quick to take an antibiotic when they are sick. Yet drinking a cup of coffee is far less dangerous!**

I have never drunk coffee nor taken a coffee enema, yet it is clear to me that we are here dealing with saving human lives.

**If taking diluted coffee enemas will help save the life of a cancer patient who is dying, then I for one will not be the one to tell him he should not take them.**

And I do not believe I am wrong in making this decision.

**Are there other problematic substances used in the Gerson Therapy?**

*There are several other Gerson "medications" which are not needed by those who are healthy, but which are given to help the sick recover health.*

**The Gerson therapy is focused on but two objectives: filling the body with nutrients and expelling toxic substances from the body. In the process of doing these two things, the cancer is totally eliminated. Everything is done to achieve these two goals.**

1 - Liver extract is given because of the continually lowered quality of fresh fruits and vegetables. Gerson began using such a product in 1950, because he found that lab reports revealed that, by the late 1940s, fresh fruits and vegetables no longer had as much nutrients as they had in the early 1930s!

If you think you can obtain enough nourishment from fruit and vegetables, then skip the liver.

2 - Pancreatin tablets are given. These help to reduce digestive problems during the heavy detoxification process.

But if you do not need it, do not take it.

3 - In addition to iodine (Lugol's solution), thyroid is also given. The purpose of this is to ensure that enough iodine is obtained by the cells. (It is the potassium and iodine which starve the sodium out of the cancer cell, killing it.)

If you think you are likely to obtain enough iodine from the Lugol's, then do not use the thyroid.

4 - Castor oil is given to help flush the poisons out of the intestinal tract, which have been poured into it from the liver through the bile ducts. The effect of castor bean oil is similar to the laxative herbs, except that it is more efficient.

You would be very wise not to skip it.

In all these matters, you are the boss. But know that Gerson worked out a formula which produces terrific results - but primarily in those who carefully remain on the full program for 18 to 24 months.

## 0.2 Preface

**This book is written for all those on the other side of hope, for the weary, and for those who despair of holding on to life - yet want to cling to it.**

**There is hope in this book. There is a way out of the dark tunnel, back into the land of the living.**

**But it will take dedication and work.**

**If you are not living in the shadow of death, then this book is not for you. Pass it on to someone who will value it.**

**Dr. Albert Schweitzer, the missionary physician to Africa, wrote this about his friend of many years, Dr. Max Gerson:**

... "I see in Gerson one of the most eminent medical geniuses in the history of medicine. He possessed something elemental. Out of deepest thought about the nature of disease and



the process of healing, he came to walk along new paths with great success. Unfortunately, he could not engage in scientific research or teach; and he was greatly impeded by adverse political conditions. In ordinary times he would have been able to expound his ideas for many years as professor at one of the important German universities; would have taught pupils who could carry on his research and teachings; would have found recognition and encouragement . . . All this was denied him."

"His was the hard lot of searching and working as an uprooted immigrant, to be challenged and to stand as a fighter. We who knew and understood him admired him for working his way out of discouragement again and again, and for undertaking to conquer the obstacles."

*Dr. Albert Schweitzer, quoted in  
Journal of the Gerson Institute, Fall 1981, p. 14.*

**The following two statements will provide researchers with a better idea of the success rate of the Gerson therapy - and the difficulties:**

"By application of these principles, the Gerson therapy is able to achieve almost routine recovery - 90% or better - from early to intermediate cancer. When cancer becomes incurable by orthodox methods (i.e., involves the liver or pancreas or is metastasized inside the body), about 50% recoveries can be achieved by the Gerson method."

"Norman Fritz gives laetrile as an example of other good nontoxic therapies. It has a good short-term response-relief from pain, remission of malignancy, improvement in appetite and sense of wellbeing or increase in strength - in 70% or 80% of cancer cases. The long-term recovery rate, however, is about 15% or less. In most cases degeneration progresses to where the laetrile is no longer sufficient. In some cases other nontoxic therapies may be constructively combined with the Gerson therapy."

"The other big advantage of the Gerson therapy is that it usually heals the body of all the degenerative diseases rather than just healing cancer. Many cancer patients are suffering from other degenerative conditions also - arthritis, heart conditions, diabetes, etc."

*Cancer News Journal, 1983 Update.*

**Of the many, many cases which could be described, here was one among several where the patient had do everything by himself:**

"Fifteen years ago, at age 70, Earl Taylor of Cairo, Illinois, was sent home to die by his doctor. Earl had prostate cancer which was spreading extensively as a large mass in the groin, in spite of the hormones his doctor had been giving him. His doctor told him to get his affairs in order, as there was nothing that could be done to save him."

"Earl had read about Dr. Gerson and the Gerson Therapy in *Prevention* magazine. He contacted Dr. Gerson's daughter in New York. She sent him Dr. Gerson's book, *A Cancer Therapy - Results of 50 Cases*. Earl had completed the sixth grade as a boy and spent all of his life working in a junk yard. He called Dr. Gerson's daughter again and told her that he couldn't understand the book. She suggested that he just follow the treatment outlined on page 235 in the book (page 236 in the latest edition, now gives an hourly schedule)."

"Earl said it was the hardest thing he ever did in his life. His wife had died years before, so he was all alone. (The institute tells people they should have help with the therapy, to have the best chance of winning.)"

"Earl was in pain, and the easiest thing to do was to stay in bed; but, he thought, 'If I do that, I'll just die.' So he forced himself out of bed, to grind and press the hourly raw juices and to do the rest of the therapy. Soon the pain was gone. In a month his doctor could no longer feel any of the large mass."

"In a few months he felt well enough to go each day to help his friend, Gwinn Dunbar, who was dying of cancer spread through both lungs. Both patients recovered on the Gerson therapy and are still alive 15 years after being hopeless."

Here is a second comment on Earl, which clarifies his case still more:

“Earl Taylor, 85, metastasized prostate cancer. Prostate cancer diagnosed by biopsy, 1963. Treated with female hormones. In 1966, mass spreading to groin, much pain, told to go home and get his affairs in order. At age 70, started Gerson therapy. In one month, mass no longer palpable by physician. In 1980, accident caused rib fracture. Bone scan showed no sign of cancer. Remains in good condition, still working part time at 85.”

*Op. cit.*, 4.

**Birger Jansson, Ph.D., of the University of Texas, found that patients with a higher sodium to potassium ratio in their diets were the ones most likely to have cancer.** Stephen Thompson, Ph.D., at the University of California, San Diego, found that increasing the sodium content of the diet - would accelerate the rate at which metastasis of colon cancer in animals occurred.

“Cancer is now the only major killing disease in the industrialized world whose rates are sharply rising. Just by way of quantitative contrast, mortality from AIDS, another eminently preventable disease, although highly alarming if not catastrophic, is relatively low. About 30,000 cases, more than half already fatal, have been reported since 1981 when the disease was first detected; additionally, it is estimated that 2-3 times as many Americans suffer from advanced symptoms of the AIDS-related complex which often progresses to frank AIDS. Rapidly increasing numbers of cases, totaling some 270,000 are projected by 1991. In contrast, there have been major reductions in deaths from cardiovascular disease, still the number one killer in the U.S., probably because of a recent decline in smoking and attention to diet and exercise.”

“With over 900,000 new cases and 450,000 U.S. deaths last year, cancer has now reached epidemic proportions, with an incidence of one in three and a mortality of one in four. Analysis of overall cancer rates, standardized for age, sex and ethnicity, has demonstrated steady increases since the 1930s, with more recent sharp annual increases in incidence rates by some 2% and in mortality rates by some 1%.”

“Cancer is an age-old and ubiquitous group of diseases. Its recognized causes and influences are multifactorial and include natural environmental carcinogens (such as aflatoxins and sunlight), lifestyle factors, genetic susceptibility, and more recently industrial chemicals. Apart from modern lifestyle factors, particularly smoking, increasing cancer rates reflect exposure to industrial chemicals and runaway modern technologies.”

Samuel Epstein, M.D., professor of  
occupational and environmental medicine,  
University of Illinois Medical Center of Chicago,  
quoted in 1987 Congressional Record, 133 (135):E3452-3453.

### 0.3 The story of Max Gerson

Max Gerson, M.D., was born in Germany on October 18, 1881. For his graduation tests, at the age of 19, Max wrote a totally new approach to a mathematics problem. His teacher could not figure

it out, so sent it to the University of Berlin. They wrote back, that it was the work of a brilliant mathematician and that Gerson should be directed into higher mathematical studies. But Gerson had other plans. He wanted to become a medical doctor. Max wanted to help people.

Graduating from the University of Freiburg in 1907 as a physician, he received advanced training under five of the leading medical experts in Germany.

Shortly after completing medical school, Gerson began experiencing severe migraine headaches. He was only 25, yet he would have to lie in a darkened room for two or three days in pain.

The doctors had no answer. One told him, "You will feel better when you are 55." But that was not much of a solution.

Then Max read about a woman in Italy who had changed her diet, and her migraines lessened. This gave him an idea, so he began tinkering with his diet. In his case, he had excellent feedback: if he made a beneficial change, the migraines reduced in intensity and frequency; if he made a mistake, one would begin within 20 minutes.

First, he tried a milk diet, but that was useless. Then he went off all milk, and that helped a little.

Then he tried eating apples only - raw, cooked, baked - and that was a great help. Slowly he added other things, till eventually he had totally eliminated his migraines.

So he told his migraine patients about his diet. He called it his "migraine diet." When they returned, they would tell him theirs was gone too. But one said it had also eliminated his lupus (*lupus vulgaris*, or tuberculosis of the skin). Gerson knew the man could not have had lupus since it is incurable, but the patient showed him his medical records. The year was 1922.

It was obvious to Gerson that the medical theory, that there is but one medicine for each disease, was incorrect. As he later stated it, the great truth was this: "Nourish the body and it will do the healing."

So Max treated some other lupus patients, and their problem vanished also. But patients came back with the news that their other problems had disappeared as well. The careful dietary program he devised was successful in treating asthma and other allergies; diseases of the intestinal tract, liver, and pancreas; tuberculosis; arthritis; heart disease, skin conditions, and on and on! Some of his most striking successes were in liver and gallbladder diseases.

In Germany at that time, trains often had private compartments, each one seating six. One day, as a train was about to pull out from the station, a man entered one of the compartments. The only other person there was a distinguished-appearing gentleman who said nothing. As the train got underway, the man started chattering to no one in particular. The gentleman tried to ignore him.

Soon the man jovially got on the subject of health, and the gentleman wished he could get to his destination a little quicker.

Then, opening his shirt slightly, the man said, "And you know, I had this lupus, right here on my chest. And this doctor, he cured it. Now it's gone!"

At this, the gentleman jumped up, lunged at the man, reached for his shirt and said, "Let me see that!"

The gentleman was Ferdinand Sauerbruch, M.D., one of Europe's leading skin and tuberculosis doctors. He well-knew that lupus cannot be cured!

Obtaining Gerson's name and address from the man, Sauerbruch contacted Gerson as soon as he reached his office. A friendship was started, and Sauerbruch, impressed with his humility and sincerity, arranged a test using Gerson's remarkable diet on 450 "incurable" lupus patients.

But after a week or so, it was obviously a failure. Sauerbruch did not think it would come to this;

he had hoped against hope. So he penned a letter to his friend Gerson and, then, slowly walked back across the hospital grounds after posting the note.

He was on his way to cancel the test; but, on the way, met a woman carrying two large trays full of meat, gravy, sugary foods, and all the trimmings. Asking her what she was doing, she replied airily: "Oh, the people over in this building are starving, so we're sneaking food in to make them happy. They have a crazy doctor!"

Sauerbruch quickly set guards to keep the diet the way Gerson had prescribed it, and then wrote a second letter informing Gerson the test was still in progress.

Result: 446 of 450 incurable patients (99%) recovered. Lupus had been shown to be curable by diet therapy.

But Gerson still had not tried his therapy on cancer patients. Even in Germany, physicians were careful about trying out new cancer remedies. When a couple of cancer victims came to him, he turned them down. But one day, a lady called him to her home, but would not tell him what was wrong with her. Arriving, she told him she had cancer and pled for him to help her. She was in bed, weakened, and in terrible condition. He told her he could not do so. "Please, she said, just write out your dietary formula, and I will sign a paper not holding you responsible for what happens." Gerson did so and left. It was obvious she was too weak to even follow the directions.

All alone, the sick woman struggled to follow the program - and recovered totally from cancer.

Learning of this, Gerson began treating other cancer patients. The year was 1928. Of his first 12 cases, 7 responded favorably, remaining symptom free for seven and a half years.

(Some of these facts we know because of testimony presented by him and others at the July 1-3, 1946, senate hearings, conducted by Claude Pepper of Florida.)

Gerson also treated Dr. Albert Schweitzer, his wife, and daughter for various health problems. Gerson saved Mrs. Helene Schweitzer from hopeless lung tuberculosis in 1931; and, several years later, he healed their daughter of a rare, serious "incurable" erupting skin condition that defied diagnosis.

Dr. Schweitzer himself came to Gerson at the age of 75, depressed and weary with advanced diabetes. In five weeks, Dr. Schweitzer had cut his insulin dosage in half, and in ten was completely off of it. Healed, and with new energy, he returned to Africa where he worked past the age of 90. In response, the world-famed Schweitzer declared, "I see in him one of the most eminent medical geniuses in the history of medicine."

Schweitzer afterward required that his physicians in Lambarene, Africa, study Gerson's book, *Therapy of Lung Tuberculosis*, before they started to treat the patients in his hospital.

Gerson was remarkable. Geniuses tend to focus their thoughts, whereas most people scatter theirs. Because of this trait, Gerson could not ride a bicycle. He would be so deep in thought that he would smash it. After having destroyed four of them, his family forbade more of that. For the same reason, he could not drive a car. His mind was continually at work, devising ways to help his patients.

One day while walking in the woods in the Harz Mountains near Bielefeld (before moving to Kassel), Max met a man who raised foxes. The rancher told him that he ran a very successful fox farm. He would buy sick, tubercular foxes for almost no cost, and later sell them. He said his foxes had the finest coats and their pelts brought the highest prices. Gerson asked him how he could do this. Mentioning that it was a secret which must not be shared with the other fox farmers, he said there was a doctor, somewhere in Germany, named Max Gerson who had a nutritional cure for disease. The farmer bought sick foxes which had lung tuberculosis, healed them with Gerson's diet of organic vegetables and fruits, and then sold them at a good profit because they produced such high-quality fox furs. Both men were happy when Gerson introduced himself.

At the age of 51, Gerson was asked to present his findings, by appointment, at a meeting of the German Medical Association. At last he would have an opportunity for the world to learn of his work to save people. On April 1, 1933, as he sat in the railroad car, on his way to Berlin, the train stopped at a station and Hitler's SS troupes entered.

When a young, inexperienced SS officer asked Gerson where he was going, Gerson, not knowing there was any danger, enthusiastically showed him X-rays and told him about his work. Impressed, the young man replied that he hoped Gerson would succeed, forgot to ask the question, and passed on to the next man just behind Gerson. For the first time, Gerson heard the question the troops were asking each passenger on the train: "Are you a Jew?"

Immediately, Max sensed the terrible danger. All the passengers except Gerson were asked that question, and Max saw one young man, a Jew, led outside, where he was gunned down as Gerson watched through the window. He had just seen the first large-scale action to collect 6,000,000 Jews for extermination in the Nazi concentration camps.

As the train continued on, Max completely changed his plans. Instead of getting off at Berlin, he continued on the train to Vienna, Austria. From there, he contacted his wife and told her to immediately come with their three girls, which she did. He also contacted all their brothers, sisters, and relatives, and offered to send money for them to leave. But they laughed at his concerns. They had their homes, their businesses, and there was nothing to fear from Hitler.

Max Gerson, his wife, and their relatives were Jews. All of those relatives (15, plus children) later perished. From Vienna, Gerson later went to Paris.

In 1936, he emigrated to America, and went to school to learn English. In January 1938 he received his medical license and began practicing in New York City. By this time, Gerson could enlarge or shrink surface cancers at will. He knew exactly what was needed to help his patients. The only question generally was whether they were in earnest enough to fully follow his program when they went home.

His first contact with medicine in America was enlightening. Called as a consultant to physicians treating a wealthy industrialist for arthritis, Gerson outlined what he would do to bring a fairly quick recovery. There was an awkward pause, and then one of the doctors said, "Dr. Gerson, you are new here. You don't understand. This man is a wealthy member of the W.R. Grace family. They own steamship lines, banks, chemical companies, and so on. You don't cure a patient like this. You treat him."

In New York, he treated 90% of his cancer patients without charge and financed his own researches in chronic diseases. From 1946 to 1948 he saw patients at the Gotham Hospital.

At the Senate hearings, he testified that he believed the liver held the key to the cure of cancer - and that if the liver was too far gone, treatment was useless. This would be understandable, since the liver, an astounding chemical laboratory, is the primary detoxifying agency in the body.

Appearing with him on July 3, 1946, at the three-day Senate hearings were five of his patients, each of whom had fully recovered from some of the most common forms of cancer in America. He also came with X-ray photographs, pathology reports from leading hospitals, and testimonials from many other patients and relatives of cancer victims.

In reaction, on November 16, 1946, in its "Frauds and Fables" category, the *Journal of the AMA* hopefully dismissed the Gerson's unprecedented Senate presentation with the words, "Fortunately for the American people this presentation received little, if any, newspaper publicity."

In its January 8, 1949, issue, the *Journal* wrote, "There is no scientific evidence whatsoever to indicate that modifications in the dietary intake of food or other nutritional essentials are of any specific value in the control of cancer."

During his lifetime, Gerson wrote 51 articles, published in medical journals. (All of his publications are listed at the back of S.J. Haught's book, *Has Dr. Max Gerson a True Cancer Cure?*) But, for the most part, Gerson worked alone. Other physicians generally feared to help him or duplicate his work, for fear of reprisal.

Eventually, Gerson's medical privileges at Gotham Hospital were revoked, and he was unable to find an affiliation with any other hospital in the city. In 1953 his malpractice insurance was discontinued. One \$100,000 malpractice lawsuit would have wiped him out. Because the larger number of those who sought him had advanced cancers, some of them died. Yet their relatives knew that they died with dignity, free from pain and brain-numbing narcotics.

Gerson's needs were simple. Patients were shocked to learn that he would generally charge \$25 for the first visit and \$5 or \$10 for subsequent visits. (They had earlier been told he charged high fees, \$1,000 or \$2,000 for each visit.)

Refusing to stop his work, Gerson treated patients at his own facilities. In October 1954 at the age of 73, he wrote his former patient and close friend, Albert Schweitzer,

“Those who say they would like to help, often tell me they cannot. They regret not being able to assist me for fear of losing their position in hospitals and laboratories. I have long abandoned thoughts of attaining any kind of recognition, nonetheless I continue on my way.”

*Journal of the Gerson Institute, Fall 1981, 16.*

Some of his best-documented, recovered patients died, when they were urged back by their former physicians for examination, and then told they must have surgery or radiation - when they were totally free of cancer symptoms or evidence.

On two occasions Gerson became violently ill after being served coffee by a group supposedly supporting him. Later laboratory tests showed unusually high levels of arsenic in his urine.

Some of Gerson's best case histories mysteriously disappeared from his files. In 1956, the manuscript and all of its copies for Gerson's almost completed book (*A Cancer Therapy: Results of Fifty Cases*) were stolen and never recovered.

Separating himself from that group, Gerson, now quite aged, raced against time to completely rewrite the book. In 1958, the book was published.

On March 4 of that same year, he was finally suspended for two years from the New York Medical Society. At a meeting of the New York Academy of Medicine, the surgeons, radiologists, and physicians condemned a colleague who was living by Hippocrates' dictum: “Above all, do no harm.”

Gerson died a year later (March 8, 1959), shortly after he fell down the stairs in his house. He was 78 years old.

Upon Gerson's death, Albert Schweitzer, the Nobel prize-winning physician and missionary, and a patient of Gerson's, made this statement:

“I see in him one of the most eminent medical geniuses in the history of medicine . . . Many of his basic ideas have been adopted without having his name connected with them. Yet he has achieved more than seemed possible under adverse conditions. He leaves a legacy which commands attention and which will assure him his due place. Those whom he cured will now attest to the truth of his ideas.”

*Albert Schweitzer, M.D., Ph.D., quoted in  
S.J. Haught, Has Max Gerson a True Cancer Cure? 1962.*

That prediction was to prove true.

At the urging of many individuals who recognized that a revival of Gerson's therapy was urgently needed, Charlotte Gerson Strauss (the youngest of Gerson's three daughters; born March 27, 1922), headed up a new venture, called the Gerson Institute, in a clinic/ hospital in Tijuana, Mexico. The Gerson Institute was incorporated on June 27, 1978, twenty years after the publication of Gerson's book, *A Cancer Therapy*, and nineteen years after his death.

The Gerson Institute headquarters is located in Bonita, California, near San Diego. The hospital, is in a suburb of Tijuana, Mexico.

Charlotte continues to travel around the world, speaking at conventions, meetings, and on talk shows. Although elderly herself, she is in good health, for she carefully remains on the nutrition and juice program her father developed.

*Addresses:*

**Gerson Therapy** - The U.S. address and phone number will, for most people, be easier to work with: Gerson Institute, P.O. Box 430, Bonita, California 91908. Phone: 619-585-7600 or 619-267-1150. Fax: 619-585-7610. Automated voice information 24 hrs/ day: 1-888-4-GERSON.

*Web:* [www.hospital-meridien.com/meridien](http://www.hospital-meridien.com/meridien)

*Email:* [meridien@hospital-meridien.com](mailto:meridien@hospital-meridien.com)

The primary Gerson treatment center is Hospital Meridien, Lava #2971, Secc. Costa Hermosa, Playas de Tijuana, B.C., Mexico, CP22240. Phone: 011-52-66-801358. Fax: 011-52-66-801831.

*Web:* [Meriden@telnor.net](mailto:Meriden@telnor.net).

Hospital Meridien is 30 minutes south of down-town San Diego.

A recently opened U.S. treatment center is the Gerson Center at Sedona, 78 Canyon Diablo, Sedona, AZ 86351. Phone or write the Bonita, California, office, above. GCS, the Sedona facility, is located 100 miles north of Phoenix and 28 miles south of Flag-staff, near Sedona, a small town of 8,000.

"I see in him one of the most eminent medical geniuses in the history of medicine ... Many of his basic ideas have been adopted without having his name connected with them. Yet he has achieved more than seemed possible under adverse conditions. He leaves a legacy which commands attention and which will assure him his due place. Those whom he cured will now attest to the truth of his ideas."

*Albert Schweitzer, M.D., Ph.D., quoted in  
S.J. Haught, Has Max Gerson a True Cancer Cure? 1962.*

## 0.4 Here is the Gerson formula

**We should settle one thing here at the beginning:** The purpose of the Gerson therapy is to save life. **People who go on this program are frequently close to death.** Unlike some other "cancer remedies," **THIS PROGRAM SAVES LIVES.** If the reader does not like the program, or wish to go on the program, that is his choice. **But he should not reprove those who do, so they can continue living.**

They need encouragement, not reproof.

**There are medicines used in this therapy to help recover the sick. You and I do not take those medicines. They are not for us. We are well.** But, for the greater part of a century, Dr. Gerson and associates found that these special substances brought people back from the brink of death - for those substances provided the ill with a combination of abundant tissue nourishment and intense tissue cleansing. Like all medicines, they are used for a time by sick people to help make them well. After that, they can be set aside.

To friends and loved ones of the sufferer with advanced cancer, we would say: **This person is battling for his or her life, and needs your help. He or she may die without earnest efforts. Let's pitch in and help.** If the situation were to be reversed, is not this what you would want others to do for you?



# Chapter 1

## Introduction

### The reasoning behind this therapy

Although this book was written for researchers and historians, it is able to make many other people better informed on these issues.

Since there are over fifty cancer treatment methods surveyed in this complete book of over 200 pages, in searching for the best ones to work with - what are the essential points we should keep in mind, in order to find the best remedial program for cancer?

(In the following overview, we will frequently refer to the cancer as a “tumor,” knowing that not all types of cancer are in that form.)

### 1.1 Four special problems

In dealing with cancer, what are the areas which need correcting?

1. **Wasting away:** Medical experts know that cancer victims starve to death. Their systems become so disorganized, due to poisons thrown into the system by the malignancy, that they cannot properly assimilate the food they eat. This problem must be dealt with.
2. **Reduce the tumor:** The tumor must be downsized or shrunk. In the medical route, this is done by applying surgery, chemotherapy, or radiation to the tumor. In the process, severe damage is done to surrounding tissue and, generally, to the entire body. Natural remedies accomplish this task by gradually dissolving the tumor, so that it is carried off in the blood stream.
3. **Clean the liver:** As the tumor breaks up, it is carried by the blood to the liver, which is the primary blood-cleaning organ. But this results in a pileup of toxic substances in the liver. So much waste is being carried to it, from the tumor, that the liver cannot eliminate it fast enough. So shrinkage of the tumor requires an urgent, ongoing cleansing of the liver. The poisons in it must be removed. If this is not done, the person will become drowsy and go into a hepatic coma. He will slip into unconsciousness, and die from liver poisoning.
4. **Clean the bowel.** As the poisons are expelled from the liver, they must be rapidly taken out of the body through the intestines and large bowel. It is vital that the body be aided in this function. Just because toxins have passed from the tumor to the liver, and into the intestinal tract - does not mean they are out of the body. We know, from how the body works in other disorders, that when the bowel is overloaded, toxic substances are reabsorbed from it - and carried to the liver and kidneys for removal.

To summarize the above: Good nutrition cleans the tumor, gradually emptying it into the bloodstream, where it travels to the liver, which cleans the blood. Help is needed to clean the liver, which then empties the poisons through the gall bladder into the small intestine. That waste must be quickly hurried out of the body.

Reading through the more than fifty cancer treatment methods in this book, we find that all of them claim to reduce the tumor tissue.

But very few of them deal with all five factors; indeed, most appear to not be aware that all five must be dealt with.

In order to have the highest rate of success, all five factors must be dealt with, and on an ongoing basis, every day!

## 1.2 Solving the four problems

*Let us now consider each of these five factors more closely:*

**1 - Wasting away:** Part One of this present book provides a wealth of information on nutrition needed to prevent cancer and aid in eliminating it. Of the several dozen treatments described in Part Two, some strongly emphasize nutrition. These include *Bulkley (47)*, *Bell (48)*, *Ozias (50)* *Hindhede (55)*, *Chase (59)*, *Kloss (66)*, *Drosnes and Lazenby (71)* *Evers (82)*, *Wigmore (84)*, *Kelley (85)*, *Knekt (89)*, *Livingston (95)*, *Schrauzer (99)*, *Issels (102)*, *Asai (106)*, *Karmali (107)* *Krebs (118)*, and *Gerson (142)*.

But, of these, most provide us with only vague data on nutritional changes needed or focus on the use of a single vitamin or nutrient.

Here are the few which actually had a nutritional program which was highly organized: *Chase (59)*, *Kloss (66)*, *Drosnes and Lazenby (71)*, *Kelley (85)*, *Krebs (especially see 126-129)*, and *Gerson (142 onward)*.

Of these, the Krebs and Gerson nutritional programs are to be noted. But the Gerson nutritional program is the most carefully structured and adapted to the needs of the cancer sufferer.

**2. Reduce the tumor:** All of the more than fifty remedial programs discussed in this book claim to reduce the tumor mass.

A number of them use special chemicals, herbs, serums, vitamins, or oxygen to do it. An excellent, brief survey of what each uses to reduce the tumor will be found on pp. 167-168.

Of the various methods used, one of the best is nutrition. Good food can not only reverse the wasting away problem; but, in addition, it is the primary way the tumor is dissolved!

Because the Gerson therapy provides the best nutrition, it is, in this respect, the best of more than forty programs for reducing the tumor.

**3. Clean the liver:** Surprisingly, although many methods have been devised to dissolve the tumor, very little attention has generally been paid to the need to come to the rescue of the overworked liver, - and remove the toxic buildup developing there as it cleans dissolving cancer tissue from the blood stream.

To our knowledge, only the Gerson program systematically deals with this problem.

**4. Clean the bowel:** Once again, the Gerson program is one of only a few which give careful attention to this need. As an important added benefit, as the liver and bowel are cleansed, pain is found to be reduced, and the person feels much better.

## 1.3 Better in seven ways

One might imagine that the present writer is prejudiced in favor of the Gerson program. Yet he wants you to know that he came to this conclusion after having written the present 200-page survey of all the better-known alternative cancer therapies and their results.

*Why is the Gerson therapy superior? Here are several very important reasons:*

**Number of people helped:** This is the outstanding factor: the pragmatic test. Does it really work? How many people has it helped? The Gerson program has helped more people recover from cancer than any other method that we know of.

**Length of time it has been used:** In the twentieth century, the Gerson therapy has been used longer than any other. Max Gerson first began using the method about the year 1910, and continued doing so until his death in 1959. In 1978 his daughter, Charlotte, teamed up with a medical group and opened a clinic in Tijana, Mexico, which has continued on down to the present. That is a span of 70 years!

**Continual improvement for 70 years:** As Gerson and those who followed him have tried to help cancer patients, they have gradually improved on the method. They were not satisfied to stop with one or two discoveries. They have considered every approach used by others and have found a few which are useful (many which were not).

**Not a single substance:** A large number of the forty alternative cancer remedies discussed elsewhere in this large book are single-item preparations. Yet it requires a broad nourishment and cleansing approach to both remove the cancer and rebuild the body. The Gerson program is broader than any other the present writer has, to date, found.

**No strange chemicals:** Other than potassium and iodine, both elements which the body needs, the Gerson therapy does not use chemicals. There are no laboratory-prepared extracts, no horse serums. Nearly all the foodstuffs can be purchased in a grocery store.

**No pain opiates needed:** Daily cleansing of the liver and bowel removes the pain. This enables the person to be much more cheerful and positive, and obtain better rest during sleep, during the recovery process. A cancer therapy is moving in the right direction when it reduces the accompanying pain. The removal of pain shows that the buildup of toxins in the body is being lowered.

**Willingness to share:** Gerson and his associates have been willing to share all they know, so folk can use it at home. That is a quality one does not find very often. We do not have here a secret formula, which is kept hidden for personal profit.

## 1.4 Five dangers

Yet, not even the Gerson therapy can heal every cancer sufferer. It should be kept in mind that certain factors reduce the likelihood of healing:

**1 - Progression:** How far the cancer has advanced. If a person begins on a nutritional/cleansing program early, he is far more likely to achieve a full recovery. (However, much of Gerson's successful work was with patients which the other physicians had given up on.)

**2 - Location:** The cancer site. Some types of carcinomas are more difficult to heal than others. Therefore, as soon as one recognizes that he has cancer, it is best to begin a full healing program.

**3 - Chemotherapy and/or radiation:** Has the individual received any chemotherapy or radiation for cancer? If so, his body has been heavily poisoned and weakened. Chemotherapy and radiation operate on the principle of trying to kill more cancer cells than the other cells. In the

process, all kinds of cells are damaged or destroyed. But even if all the cancer cells were to be eliminated by chemo or radiation, - if the body has been greatly weakened in the attempt, and if nothing has particularly been done to cleanse the system of impurities or rebuild it with the best of food, the person would probably relapse into cancer again.

**4 - Fully on the program:** If the person does not fully go on the Gerson program (the choice of many), he/she is so delighted with the early relief that they only do the program partially or quit after a few months.

**5 - After a relapse:** If the person goes on a cancer-reduction program (Gerson, Laetrile, Essiac, etc.), then reduces or terminates it before the cancer is fully gone, and later tries to go on the program again after the cancer returns - he can find himself in very real trouble. Frequently, after a relapse, the cancer can not be controlled as it earlier had been.

## 1.5 Why did Gerson succeed?

Max Gerson succeeded where many have failed because he spent decades trying to improve his clinical work and watched closely to see what worked instead of what the researchers, working with rats, had concluded.

“The physician ... hesitates to take risks for his patients by applying a not-recognized treatment ... I was in a more favorable position. Ninety to ninety-five percent of my patients were far advanced (terminal) cases without any risk to take; either all recognized treatments had failed or the patents were inoperable from the beginning.”

*Max Gerson, A Cancer Therapy, p. xiv.*

“Retrospectively, I think the results were arrived at because I did not follow most of the scientific literature nor the laboratory findings, as far as they did not accord with the clinical confirmations. ‘*Der Erfolg am Krankenbett ist entscheidend*,’ Professor Kussmaul said. (‘The result at the sick-bed is decisive.’) I do not want to make the mistake Winston Churchill expressed so clearly: ‘Men occasionally stumble over Truth, but most pick themselves up and hurry off as if nothing had happened.’ ”

*Max Gerson, A Cancer Therapy, p. 212 [cf. p. 207]<sup>1</sup>*

“The scientifically accepted method is that these [cancer] symptoms alone will be treated *locally* wherever they appear. [If there is cancer of the mouth, treat the mouth, etc.] That is what we physicians learn and how we are trained in university clinics. All research work adheres mostly to these local symptoms. This is, in my opinion, the reason why decisive progress in cancer treatment has been impeded.”

*Max Gerson, A Cancer Therapy, p. 37<sup>2</sup>.*

“Symptomatic treatment is harmful wherever in nature it is applied to the soil, plants, animals or human beings, or in medicine.”

“Each part is important, but the whole in its infinitely fine order is more important.”

---

<sup>1</sup>**Livro:** “A Cancer Therapy - The Cure of Advanced Cancer by Diet Therapy”, **Capítulo 28:** “Short Practical Explanation of the Medication”, **Parágrafo 34.**

<sup>2</sup>**Livro:** “A Cancer Therapy - The Cure of Advanced Cancer by Diet Therapy”, **Capítulo 5:** “The Theory”, **Parágrafo 4.**

*Dr. Werner Kollath, quoted in  
Max Gerson, A Cancer Therapy, p. 5<sup>3</sup>.*

“As Dr. Gerson expresses it, cancer is not specific. It is a degenerative condition of the total metabolism, including damage to the liver and all essential organs, which then makes it possible for cancer to develop. Similar damage also precedes other chronic diseases.”

*Charlotte Gerson Straus, Appendix I,  
A Cancer Therapy, p. 391<sup>4</sup> [Gerson's youngest daughter].*

Max Gerson recognized that God's plan was for man to eat wholesome food. In order to provide food for the plants, God gave us the soil, and then He gave us a gardener to till it!

“In *Readers Digest*, Dr. Thomas Barrett referred to the earthworm and soil. A French peasant told Dr. Barrett, ‘*Le Bon Dieu* knows how to build good earth and He has given the secret to the earthworms.’ ”

*Thomas Barrett, Readers Digest, May 1948,  
quoted in Max Gerson, A Cancer Therapy, p. 184.*

## 1.6 Gerson explains his method

The following statements will help you understand Max Gerson's work:

“The experimental causation of cancer, first accomplished by Yamagiva and Itchikawa, through rubbing tar substance on the ears of rabbits for about nine months, is of importance insofar as they found that before the cancer started to appear, the liver was damaged and showed pathological changes, together with the kidneys, spleen and the lymphatic apparatus. The long period was required to poison the liver, before the damaged cells could perform the ‘mutation’ into cancer.”

*Max Gerson, A Cancer Therapy, p. 40<sup>5</sup>.*

“Cancer means: (1) Slow intoxication and alteration of the whole body, especially the liver. (2) Invasion of the **Na**-group [sodium and chloride], loss of the **K**-group [potassium and iodine], followed by tissue edema. (3) Lower electrical potentials in vital organs, more edema, accumulation of poisons, loss of tension, tonus, reduced reactivation and oxidation power, dedifferentiation [lack of differentiation] of some cells. (4) Cancer starts: general poisoning increases, vital functions and energies decrease. Cancer increases. (5) Further destruction of the metabolism and liver parenchym [the distinguishing or unique cells of the liver are destroyed]. Cancer rules, is acting, spreading. (6) Loss of last defense [the liver]. Hepatic coma. Death.”

*Max Gerson, A Cancer Therapy, p. 102<sup>6</sup>.*

---

<sup>3</sup>**Livro:** “A Cancer Therapy - The Cure of Advanced Cancer by Diet Therapy”, **Capítulo 1:** “The ‘Secret’ of my Treatment”, **Parágrafo 5.**

<sup>4</sup>**Livro:** “A Cancer Therapy - The Cure of Advanced Cancer by Diet Therapy”, **Capítulo 34:** “Atualizations: Appendix I, II and III”, **Item 34.1:** “Appendix I: Restoring the healing mechanism in other chronic diseases - Charlotte Gerson”, **Parágrafo 3.**

<sup>5</sup>**Livro:** “A Cancer Therapy - The Cure of Advanced Cancer by Diet Therapy”, **Capítulo 5:** “The Theory”, **Parágrafo 18.**

<sup>6</sup>**Livro:** “A Cancer Therapy - The Cure of Advanced Cancer by Diet Therapy”, **Capítulo 14:** “Mineral Metabolism in Degenerative Diseases”, **Parágrafo 44.**

“The cancerous body is *anergic*, which means that it cannot prevent cancerous growth nor respond and defend itself against it. The treatment, therefore, has the task of restoring these normal functions, . . . and finally, the conditions are restored for production, activation and reactivation of oxidizing enzymes.”

*Max Gerson, A Cancer Therapy, p. 124<sup>7</sup>.*

“From the beginning, I felt that the tumor had to be killed while some scientists were satisfied to arrest the growths for as long a time as possible. In one of my articles I enumerated eleven points of difference between normal and cancer cells. The most important points are: cancer cells have more **Na** (ionized) [Cancer cells have more ionized sodium], live on fermentation (not on the normal oxidation), are negatively charged electrically, do not have the normal exchange with blood and serum, and grow and spread uncontrolled. Studying these, I felt there must be a way to prevent the fermentation, that is, to eliminate the basic facts upon which fermentation is built and can function. The fermentation is vital for the life of the cancer cell. That is the object upon which we could base further tests and explorations. How could this be done? The most **Na**-free [sodium free] diet has to be applied to extract **Na** from cancer cells through the blood and lymph stream. Instead of **Na**, potassium and the oxidizing enzymes have to be brought in with the help of an allergic inflammation.”

*Max Gerson, A Cancer Therapy, p. 195<sup>8</sup>.*

“According to Dr. Gerson’s research, the beginning of all chronic disease is the loss of potassium (K) from the cells and invasion of sodium (Na) into the cells, and with it water. This causes edema and the resulting malfunctions - loss of electrical potentials in the cells, improper enzyme formation, reduced cell oxidation, etc. The building of almost all enzymes requires K as a catalyst (activating agent) and is inhibited (slowed or stopped) by Na . . . In order to initiate healing then, it is essential to remove excess Na from the cells, reintroduce large amounts of K, and detoxify the system of accumulated intermediary substances and other toxins. This is best accomplished by large amounts of K from fresh fruit and juices, detoxification through the kidneys and by enemas, and reactivation of the liver by special liver therapy. If this were only a theoretical assumption, it would not be worth mentioning. However, in Dr. Gerson’s many years of experience with all types of chronic disease, this process worked in practice. Degenerative disease could be reversed, eliminated, and the body healed.”

*Charlotte Gerson, Appendix I,  
A Cancer Therapy, pp. 392-393<sup>9</sup>.*

“... a precancerous development [in the body] . . . does mean the pre-stage of any kind of skin cancer, but it does mean a gradual intoxication with a loss of the normal content of the potassium group and the iodine from the tissues of vital organs. That chronic loss opens the door for the invasion of sodium, chloride and water into the cells, producing a kind of edema. In my opinion, it must be assumed, as a rule, that sodium and iodine favor undifferentiated, quicker growth, seen in embryos and cancer; while potassium and iodine assure a more differentiated, slower growth with normal cell division. Here sodium and potassium are the exponents of two minerals groups with opposite electrical potentials, keeping the body in a controlled equilibrium . . .”

“Iodine is necessary for higher differentiation and increased oxidation and could be used for that reason against cancer development, but not alone.”

---

<sup>7</sup>**Livro:** “A Cancer Therapy - The Cure of Advanced Cancer by Diet Therapy”, **Capítulo 17:** “The Healing of Cancer”, **Parágrafo 26.**

<sup>8</sup>**Livro:** “A Cancer Therapy - The Cure of Advanced Cancer by Diet Therapy”, **Capítulo 26:** “The Practice of the Therapy”, **Item 26.1:** “Enemas”, **Parágrafo 3.**

<sup>9</sup>**Livro:** “A Cancer Therapy - The Cure of Advanced Cancer by Diet Therapy”, **Capítulo 34:** “Atualizations: Appendix I, II and III”, **Item 34.1:** “Appendix I: Restoring the healing mechanism in other chronic diseases - Charlotte Gerson”, **Parágrafo 8.**

So starving the cancer cells of their sodium was an important factor in killing the cancer cell. Another was abundant, good nutrition - which would fill the body with potassium.

“...reading all the [medical] literature, I saw that all the scientists treat the symptoms. These, I thought, are only symptoms. There must be something basic behind them ...”

“...through my work with tuberculosis, I learned that in tuberculosis and in all other degenerative diseases, one must not treat the symptoms. The body - the whole body - has to be treated ... I came to the conclusion that the most important part of our body is the digestive tract ... And at the same time eliminate all the waste products ...”

“... the liver plays an important role. It eliminates the toxins from the body, prepares them so they can enter into the bile ducts, and can thus be eliminated with the bile; - that is not an easy job ...”

“The digestive tract is very much poisoned in cancer. How can we handle that? Detoxification is an easy word, but it is very difficult to do in cancer patients. These cases, when they are far advanced, can hardly eat. They have no stomach juice, the liver doesn't function, the pancreas doesn't function, nothing is active.”

“Where do we begin? The most important first step is the detoxification. So let us go into that. First we gave some different enemas. I found out that the best enema is the coffee enema as it was first used by Prof. O.A. Meyer in Goettingen. This idea occurred to him when, together with Prof. Heubner, he gave caffeine solution into the rectum of animals. He observed that the bile ducts were opened and more bile could flow ...”

“The patients [I worked with] reported that this was doing them good. The pain disappeared even though in order to carry through the detoxification, we had to take away all sedation. I realized that it is impossible to detoxify the body on the one hand and put in drugs and poisons on the other ... One patient told me that he had one grain of codeine every two hours and he got morphine injections - how can you take these away? I told him that the best sedation is a coffee enema. After a very short time he had to agree with that, [Gerson then mentions that his treatments cause the tumors, as they dissolved away, to begin shrinking] ...”

“These patients who absorb the big tumor masses [from the tumor into the blood stream into the liver] are awakened with an alarm clock every night because they are otherwise poisoned by the absorption of these masses. If I give them **only** one or two or three enemas, [this will not detoxify enough], they die of poisoning. I did not have the right as a physician to cause the body to absorb all the cancer masses and then not to detoxify enough. With two or three enemas they were not detoxified enough! They went into a *coma hepaticum* (liver coma). Autopsies showed that the liver was poisoned. I learned from these disasters that you can't give these patients too much detoxification [into the bloodstream without take it out of the body with enemas] ... When I didn't give these patients the night enemas, they were drowsy and almost semi-conscious in the morning. The nurses confirmed this and told me that it takes a couple of enemas till they are free of this toxic state again. *I cannot stress the [importance of] detoxification enough.* Even so with all these enemas, this was not enough! I had to also give them castor oil by mouth and by enema every other day, at least for the first week or so. After these two weeks you wouldn't recognize these patients any more! They had arrived on a stretcher, and now they walked around! They had appetite. They gained weight and the tumors went down.”

Max Gerson, *A Cancer Therapy*, pp. 406-408<sup>11</sup>.

---

<sup>10</sup>**Livro:** “A Cancer Therapy - The Cure of Advanced Cancer by Diet Therapy”, **Capítulo 26:** “The Practice of the Therapy”, **Item 26.1:** “Enemas”, **Parágrafo 8.**

<sup>11</sup>**Livro:** “A Cancer Therapy - The Cure of Advanced Cancer by Diet Therapy”, **Capítulo 34:** “Atualizations: Appendix I, II and III”, **Item 34.2:** “Appendix II: The cure of advanced cancer by diet therapy - Max Gerson”, **Parágrafo 21.**

“In former periods when there was not enough detoxification in my treatment, after the tumor was killed, the patient did not die of cancer - but of a serious intoxication with *coma hepaticum* caused by absorption of necrotic [dead] cancer tissue, as several autopsies have shown. The solution is that all these former failures can no longer occur if there is an intensive detoxification [through enemas] maintained long enough and a potassium plus iodine predominance [through nutrition] kept present ... Only a detoxified body has both power of resistance and healing.”

*Max Gerson, A Cancer Therapy, pp. 197-198*<sup>12</sup>.

Gradually, the tumor shrinks and dissolves. But more is required than merely killing the tumor cells. Next must come the task of cleaning those dead cells out of the system, and killing cancer cells elsewhere in the body.

“But now we have to deal with a mass of dead cells in the body, in the blood stream - and they have to be eliminated wherever they may be. And that is not so easy! The ripe [cancer] cells, the mature cells, are very abnormal. They are much more easily killed than the other cells which are unripe, not yet mature, and not so well developed. And there are other cancer cells in lymph vessels. These are clogged at both ends by cancer cells. No blood and no lymph can reach them. There are cancer cells in the glands. They are hidden there, protected from regular circulation. So it isn't easy to reach these. At first it is only the big [tumor] mass which is killed. But this dead mass now has to be absorbed wherever it is ... This absorption is only possible through the blood stream. I call this ‘parenteral digestion.’ [In contrast,] *Enteral digestion* is in the intestinal tract. Parenteral digestion takes place outside the digestive tract, through the blood stream. It becomes important then to continually carry on detoxification day and night in order to bring the parenteral digestion to the highest point ... How can this be done?”

... [Gerson says the key is in building good soil and only eating good food.] ... “But our modern food, the ‘normal’ food people eat is bottled, poisoned, canned, color added, powdered, frozen, dipped in acids, sprayed - no longer normal. We no longer have living, normal food ... One cannot cure very sick people by adding poisons to their systems. We cannot detoxify our bodies when we add poisons through our food, which is one of the reasons why cancer is so much on the increase.”

*Max Gerson, A Cancer Therapy, p. 410*<sup>13</sup>.

But an important key is whether the liver can be saved.

“I should like to tell you what we do to prove that this treatment really does work on cancer. Number one, the results. I think I can claim [in 1956] that I have, even in these far advanced cases, 50% results. The real problem arises when we cannot restore the liver. Then there is no hope. The liver - the restoration of the liver and its functions - are so important that some of the patients whose livers cannot be restored die some six months to 2½ years later from cirrhosis. Autopsies show no cancer cells in the body. They did not die from cancer. They died from a shrunken liver.”

*Max Gerson, A Cancer Therapy, p. 411.*

---

<sup>12</sup>**Livro:** “A Cancer Therapy - The Cure of Advanced Cancer by Diet Therapy”, **Capítulo 26:** “The Practice of the Therapy”, **Item 26.1:** “Enemas”, **Parágrafo 10.**

<sup>13</sup>**Livro:** “A Cancer Therapy - The Cure of Advanced Cancer by Diet Therapy”, **Capítulo 34:** “Atualizations: Appendix I, II and III”, **Item 34.2:** “Appendix II: The cure of advanced cancer by diet therapy - Max Gerson”, **Parágrafo 32.**



## But can we not use drugs and hormones to stimulate the liver?

“We have to separate the state of pre-cancerous condition from the state where the cancer appears. In the pre-cancerous condition, all is prepared. The liver is sufficiently damaged and the other organs of the intestinal tract are damaged enough and then later the symptoms appear. Until then we have the pre-cancerous condition - and this condition cannot be cured with hormones and enzymes, etc. We can to a certain degree stimulate the liver with hormones. We can stimulate the liver with cortisone. We can stimulate the liver with adrenalin, etc., but then we take out the last reserves. We empty the liver instead of refilling it. What we have to do in cancer - a degenerative, deficiency disease - is to refill the organs which are empty and poisoned.”

*Max Gerson, A Cancer Therapy, p. 414.*

Question: [Question from audience] “Your treatment worked in advanced cases of cancer of the liver?”

Answer: [Dr. Gerson’s reply] “If more than half to three-quarters of the liver is gone, you can’t restore its function enough to save the patient. You may save them for half a year to a year, but then the liver may shrink and the patients die of a shrunken liver, cirrhosis of the liver. The liver is such an important organ that when it has to eliminate its own cancer, this has to be done by the healthy liver tissue. Yet the process of elimination can damage the healthy liver tissue, *if we don’t detoxify constantly day and night*, especially in these cases . . . [He then tells of a woman who was brought to him with an apparently hopeless liver in terrible shape, - but he was able to save her because she kept taking the coffee enemas, every hour or two, and castor oil enemas twice a day - instead of the normal regime of 5 coffee enemas every 24 hours, and one castor oil enema every two days.]”

*Max Gerson, A Cancer Therapy, p. 416<sup>14</sup>.*

“The Damocles sword of cirrhosis hangs over all cancer patients who have far advanced malignancies in their abdominal organs. We know that all these organs send their blood through the portal veins into the liver where tumor cells settle very frequently as soon as the liver, working as a filter, has lost its defense power.”

*Max Gerson, A Cancer Therapy, p. 68<sup>15</sup>.*

---

<sup>14</sup>**Livro:** “A Cancer Therapy - The Cure of Advanced Cancer by Diet Therapy”, **Capítulo 34:** “Atualizações: Appendix I, II and III”, **Item 34.2:** “Appendix II: The cure of advanced cancer by diet therapy - Max Gerson”, **Parágrafo 67.**

<sup>15</sup>**Livro:** “A Cancer Therapy - The Cure of Advanced Cancer by Diet Therapy”, **Capítulo 10:** “Cancer and Liver”, **Item 10.1:** “A General Survey”, **Parágrafo 24.**



# Chapter 2

## The Basic Therapy

### What is included in the program

The present writer could find the full Gerson program, clearly presented, only in the middle and back of the two Gerson books. Yet people with cancer are frequently too weary to search through all those pages to find the complete program.

Therefore a distillation of this data has been gathered here. This may be the only place the entire program is available in a single location. Doubtless, the Gerson Institute will eventually publish a book with all of the following information in one place.

Our sources are as follows:

*Max Gerson, A Cancer Therapy, pp. 187<sup>1</sup>-248, 391-422<sup>2</sup>, and scattered portions of pp. 3-185<sup>3</sup>.*

*The Gerson Institute, The Gerson Primer, pp. 3-18, 36-46, 101-102.*

*Charlotte Gerson, several explanatory lectures and demonstration videos.*

### 2.0.1 How to begin

If you decide to go on the Gerson program, it is best that you make an appointment and go to the Gerson Institute. (Gerson Institute 888-4-GERSON (888-443-7766) / 619-267-1150 / P.O. Box 430, Bonita, CA 92002.)

Life is short enough, and you are in a crisis. Time could be very short. You and your helper will learn what to do, and your special needs will be ascertained. The costs are nothing compared with what you would pay for an equivalent amount of time in a regular hospital. However, if you cannot do this, the folk at Gerson are very willing for you to care for yourself at home.

For more pre-preparation ideas, read *Initial House Preparation*, under *Schedules*, near the back of this book.

### 2.0.2 Do this first

If you plan to go to the Gerson Institute, it would be well to first read this section very carefully. If you plan to go on the program at home, you will find here a brief overview of all aspects of the

---

<sup>1</sup>**Livro:** “A Cancer Therapy - The Cure of Advanced Cancer by Diet Therapy”, **Capítulo 25:** “Cancer Diet and its Preparation”.

<sup>2</sup>**Livro:** “A Cancer Therapy - The Cure of Advanced Cancer by Diet Therapy”, **Capítulo 34:** “Atualizations: Appendix I, II and III”.

<sup>3</sup>**Livro:** “A Cancer Therapy - The Cure of Advanced Cancer by Diet Therapy”, **Capítulo Preliminar:** “Preface”.

therapy.

1. Thoughtfully read through the following formula. Keep in mind that every part is important, and that it is the result of 70 years of research, field testing on human beings (not rats), multiplied thousands of healings, with continual modifications and improvements in formula.
2. Order the mail-order supplies (flax oil, potassium, etc.). They are listed at the back.
3. Purchase several-days worth of local supplies (carrots, apples, etc.)
4. Borrow or purchase a Norwalk juicer. It will combine the pulping and pressing operations. Or obtain a lower-cost juicer (such as a Champion), which will make the pulp, and a separate manual press. (Norwalk juicers have electrically operated presses, which are very nice!)
5. Begin taking the juices and enemas while you wait for the other supplies.
6. Add on the other features of the program as additional supplies arrive.

It is vital that you keep in mind that there is danger in not remaining on the program. The Gerson Institute finds that some drop out when, several months later, they begin feeling so much better. *Yet the underlying problem has not yet been corrected.* Later, when they experience a relapse, a return to the therapy is frequently not as successfully made.

Therefore it is urgent that you stay with the program *for a year and a half to two years.*

### 2.0.3 Special needs

Here are two very special needs, which could be overlooked:

**Rest:** A cancer patient needs a lot of rest. Do not try to do much exercise or work in the early stages of the program. Do not overdo. As energy returns, you can start on some very mild exercise, such as a five-minute walk - but not in extreme heat or cold. This can later be extended to 8-10 minute walks. When tired, stop, and return to shorter walks. Do not do strenuous exercise (tennis, etc.) for a year or two. Avoid swimming pools, which are chlorinated. Ocean water is too salty. Only swim in a clear mountain stream or lake, with no pollutant runoff into it or above it.

**Danger of infections: Beware of taking cold and getting sick!** Cancer patients have greatly weakened immune systems. Be very careful in this respect.

## 2.1 Forbidden foods

Read the labels of everything you put in your body or on your body.

**Junk foods:** Do not use sharp spices (fresh or dried herbs are permitted), tea, coffee, instant coffee, cocoa, chocolate, tobacco, alcohol, refined sugar, white flour, refined flour, candies, ice cream, cream, or cake.

**More junk foods:** Do not use foods that are bottled, canned, frozen, preserved, refined, salted, smoked, or sulphured. Do not use commercial beverages.

**Heavy foods:** Do not use nuts, mushrooms, soy beans and soy products, pickles, cucumbers.

**Oil, meat, dairy products:** Do not use fats, oils, or grease. Do not use meat, fish, eggs, milk, butter, cream, cheese. Do not use avocados or nuts (too much fatty acid).

**Lecithin:** Because of its fat content, lecithin should not be used while on the program.

Question: “Soy products and soy beans are forbidden. But is lecithin forbidden, which is made from soy-beans?”

Answer: “Since soy beans contain fats, I had to forbid them. Cancer patients are not able for a long time to digest fats to the end product. When some intermediate substances are left in the body, they work as carcinogenic substances. Therefore we had to cut out fats, oils, and goods containing them . . .”

*Max Gerson, A Cancer Therapy, p. 414<sup>4</sup>.<sup>5</sup>*

**Certain fruits:** Do not use berries or pineapple. Their aromatic acids cause unfavorable reactions. (Red currents are all right.) Do not use sulphured dried fruits.

Question: “Why are all berries prohibited?”

Answer: “Some of the patients are hypersensitive, especially in the beginning, against berries which are a little difficult to digest. Therefore I cut them out.”

*Max Gerson, A Cancer Therapy, p. 414.*

**Salt products:** Do not use salt products, such as table salt, sodium bicarbonate, soda, and all salt substitutes. Salt is now added to many different types of food.

**Spices:** Do not use spices (paprika, all types of pepper).

**Alfalfa seeds and sprouts:** Never use alfalfa seeds and sprouts. They contain *canavanine*, which may cause flare-ups (reactions) in rheumatoid conditions.

**Certain leaves:** Do not use leaves of carrots, radishes and mustard greens.

**Water:** While on the *full* program, drink no water. The full capacity of the stomach is needed for juices and soup. (However, do not imagine that this applies if you are *not fully* on the program. If you are only taking, say, 4 cups a juices a day, and do not want to bother making more - you had better drink additional water! Of course, if you are not on the full program, you are far less likely to solve your cancer problem.)

**Fasting:** In most cases, fasting is also forbidden. Cancer is a chronic disease and serious nutritional deficiencies exist. Good food is urgently needed.

Question: “What is your conception of a prolonged [food] fast or periodical three-day fast?”

Answer: “You can’t let the cancer patient fast. In the cancer patient the body is so depleted if you let them fast they go downhill terribly.”

*Max Gerson, A Cancer Therapy, p. 417<sup>6</sup>.*

**Vitamin and mineral supplements:** Here is what Dr. Gerson had to say about taking supplementary vitamins and minerals while on the Gerson therapy:

---

<sup>4</sup>**Livro:** “A Cancer Therapy - The Cure of Advanced Cancer by Diet Therapy”, **Capítulo 34:** “Atualizações: Appendix I, II and III”, **Item 34.2:** “Appendix II: The cure of advanced cancer by diet therapy - Max Gerson”, **Parágrafo 55.**

<sup>5</sup>Gerson made that statement in 1956; in 1959, he discovered that flaxseed oil greatly helped cancer patients, so he began prescribing it.

<sup>6</sup>**Livro:** “A Cancer Therapy - The Cure of Advanced Cancer by Diet Therapy”, **Capítulo 34:** “Atualizações: Appendix I, II and III”, **Item 34.2:** “Appendix II: The cure of advanced cancer by diet therapy - Max Gerson”, **Parágrafo 81.**

Question: “Are vitamin and mineral supplements okay [when a person has cancer]?”

Answer: “No, they are wrong because calcium and many other minerals cannot be added so easily. They bring the system out of harmony. With calcium you can produce cancer . . . No calcium, no magnesium, no other minerals. I tried it . . . One should not change the mineral metabolism, especially in cancer. Only the two most important minerals potassium and sodium must be balanced. This is the need of the cancer patient.”

*Max Gerson, A Cancer Therapy, p. 415<sup>7</sup>.*

“On the basis of my treatment . . . hormones, some vitamins [A, D, and E named], calcium phosphate compositions and *caridin* [a type of synthetic iodine] had a carcinogenic effect.”

*Max Gerson, A Cancer Therapy, p. 220<sup>8</sup>.*

Dr. Gerson accidentally overlooked the above question on vitamins; so additional questions were later asked about them:

Question: “Is folic acid treatment contraindicated during treatment of cancer?”

Answer: “Yes, folic acid did damage.”

*Max Gerson, A Cancer Therapy, p. 417<sup>9</sup>.*

Question: “What vitamins are okay to take with your treatment?”

Answer: “With the vitamins we have a similar situation as we saw with the hormones. It damaged patients with vitamin A, vitamin E, vitamin B and *B*<sub>6</sub>. Patients get really damaged. Vitamin A and D is picked up by the cancer cells immediately. Niacin we can use.”

*Max Gerson, A Cancer Therapy, p. 418<sup>10</sup>  
(more about niacin on page 209<sup>11</sup>.)*

“Several times I observed that vitamins in good combinations, with or without minerals, produced a *regrowth* of cancer or new spreadings in a few days. The patient felt better for a shorter or longer period through what may be regarded as the stimulation of the entire metabolism. However, the cancer regrew, caused by what some other authors explained as the greater attraction power of the cancerous tissue.”

*Max Gerson, A Cancer Therapy, p. 210.*

[In young boys and girls] Ten to fourteen days after the administration of calcium compound, the cancers started a rapid regrowth and were beyond cure. I had the impression that calcium-composition worked in the cancer body like Na. [sodium].

*Max Gerson, A Cancer Therapy, p. 210.*

---

<sup>7</sup>**Livro:** “A Cancer Therapy - The Cure of Advanced Cancer by Diet Therapy”, **Capítulo 34:** “Atualizações: Appendix I, II and III”, **Item 34.2:** “Appendix II: The cure of advanced cancer by diet therapy - Max Gerson”, **Parágrafo 63.**

<sup>8</sup>**Livro:** “A Cancer Therapy - The Cure of Advanced Cancer by Diet Therapy”, **Capítulo 31:** “Some Failures Medication: Not Specific”, **Parágrafo 7.**

<sup>9</sup>**Livro:** “A Cancer Therapy - The Cure of Advanced Cancer by Diet Therapy”, **Capítulo 34:** “Atualizações: Appendix I, II and III”, **Item 34.2:** “Appendix II: The cure of advanced cancer by diet therapy - Max Gerson”, **Parágrafo 71.**

<sup>10</sup>**Livro:** “A Cancer Therapy - The Cure of Advanced Cancer by Diet Therapy”, **Capítulo 34:** “Atualizações: Appendix I, II and III”, **Item 34.2:** “Appendix II: The cure of advanced cancer by diet therapy - Max Gerson”, **Parágrafo 93.**

<sup>11</sup>**Livro:** “A Cancer Therapy - The Cure of Advanced Cancer by Diet Therapy”, **Capítulo 28:** “Short Practical Explanation of the Medication”, **Parágrafo 19.**

“Other failures [in saving cancer patients] resulted from a substitution of so-called *caridin* for Lugol’s and thyroid, as well as from the application of some other hormones and vitamins, ovarian substance, vitamin E, A, D, etc. . . . I administered calcium and phosphate compositions in a number of cases where the X-rays showed far advanced decalcification and in three cases of hemophilia, complicated by osteosarcoma tumors. The bleedings had been stopped with this medication, but the tumors started to grow immensely. Several of these cases were lost.”

Max Gerson, *A Cancer Therapy*, p. 220<sup>12</sup>.

In summary, when malignant tumor growth is occurring, do not take single vitamins, with the exception of the above-mentioned niacin, vitamin C and *B*<sub>12</sub>. Be guarded about taking calcium.

### 2.1.1 Forbidden non-food substances

Do not take hormones, especially opposite-sex hormones! For more on this, see Gerson’s *A Cancer Therapy*, p. 210. Do not take raw liver juice, because it may be infected with bacteria (see pp. 421-422 in the 5th edition of *A Cancer Therapy*.) The Gerson Institute now uses desiccated liver tablets.

**Skin:** Do not use cosmetics. They clog the pores, and keep the skin from breathing and eliminating toxins. While on any intensive therapy, use no skin lotions, creams, etc. of any kind, nor nail polish. Do not use lipstick.

**Deodorants:** Do not use any deodorant or antiperspirant. They are harmful, block lymph passages, and are absorbed and poison the system. To block the lymph passages is to force the toxins back into the body. Do not use perfumes or perfumed substances.

**Salt products:** Do not use salt products, such as sodium bicarbonate (in food, toothpaste, gargles, etc.), soda, epsom salts, and all salt substitutes. Do not brush your teeth with baking soda. Do not gargle with it. Do not use toothpaste which has it. Salt is now added to many different types of food.

**Fluorine:** Do not use fluoridated toothpaste. Do not use fluorine gargle, hair dying, and permanents. Do not use any other hair dyes.

**Hair:** Do not use hair sprays, including lacquers. Do not use hair dyes or permanents.

**Sprays:** Get all aerosol sprays, air fresheners, perfumed items, insecticides, paint fumes, and similar materials out of the house.

**TV:** Avoid television radiation.

**Other toxic substances:** Eliminate from your home the following: asbestos, cigarette smoke, pesticides and herbicides, fluoride in the water, new carpeting, urea formaldehyde insulation (insulation boards). Also get rid of synthetic materials in rugs, draperies, bedding, and clothing.

**Teeth:** It is best that you care for all dental root problems. It is possible for tooth infections to not be noticed, yet be gradually sending poison throughout the body. Solve dental root canal and abscess problems.

**Tooth fillings:** Mercury (amalgam) dental fillings are another source of poisoning. Mercury is a highly toxic heavy metal. However, removing amalgam fillings can cause temporary mercury poisoning. So it is best not to eliminate those fillings until 6-12 months after going on the program. Beware of gold crowns, which have been placed on top of amalgam fillings! Have them removed later.

---

<sup>12</sup>**Livro:** “A Cancer Therapy - The Cure of Advanced Cancer by Diet Therapy”, **Capítulo 31:** “Some Failures Medication: Not Specific”, **Parágrafo 6.**

**Sunscreens:** Do not use sunscreens. When exposed to the sunlight, it is now known that the sunscreen becomes a carcinogen!

**Sunlight:** Do not take too much sunlight.

## 2.2 Foods

The Gerson diet is remarkably different than that given to cancer patients in the hospitals of the land. For example, medical experts advise that cancer patients can eat most anything and do just fine - as long as they have the operation and/or take the chemotherapy.

[Some medical experts commit the fail of allow the patients to eat most anything after operation and/or chemotherapy. For example, ...] “once the patient has survived the operation and the convalescence has followed, the diet is very liberal and practically *without restrictions*. Patients who have suffered partial resections of the stomach can manage practically the same diet as normal persons.”

*Dietotherapy Clinical Application of Modern Nutrition,*  
quoted in Max Gerson, *A Cancer Therapy*, p. 57<sup>13</sup>.

[... This ignorance can kill the cancer’s patients. There are someones that even recommended an acidifying and poisoning diet. For example, ...] Auler (1937-1941) recommended [for cancer] a non-sparing diet, rich in salt and spices, raw meat several times weekly ... Bruenings, Frankfurt a/Main (1930s) recommended a diet poor in carbohydrates and rich in proteins, aided by insulin; he believed in improvement by an acidifying effect.

*Max Gerson, A Cancer Therapy*, p. 55<sup>14</sup>.

### 2.2.1 Foods to use

The Gerson diet is filled with good food!

**Larger amounts:** Because the Gerson diet has fewer calories and digests better, therefore larger and more frequent meals must be served. Cancer has starved the body, and additional food is needed in order for proper rebuilding to occur. Some even eat at night.

The primary objective of this diet is to detoxify the entire system, and restore the functions of the liver and the metabolism. In the beginning, some patients may find it difficult to consume all the prescribed food and juices. But, in about 2 weeks, after a good detoxification is beginning to take effect, the metabolism should improve and the appetite increase.

**Individually adapted:** So the treatment has to be adapted to how far advanced the malignancy, the flare-ups, and other complications and interferences are.

**Limited diet:** The Gerson diet is limited to certain things. *The primary foods are these:*

- **Fresh juices:** Juices of fruits, leaves, and vegetables.
- **Raw fruit and vegetables:** Large quantities either in their natural form, finely grated, or salads of fresh leaves and vegetables.

---

<sup>13</sup>**Livro:** “A Cancer Therapy - The Cure of Advanced Cancer by Diet Therapy”, **Capítulo 8:** “Different Authors’ Cancer Therapies by Diet - A Survey”, **Parágrafo 6.**

<sup>14</sup>**Livro:** “A Cancer Therapy - The Cure of Advanced Cancer by Diet Therapy”, **Capítulo 8:** “Different Authors’ Cancer Therapies by Diet - A Survey”.



- **Stewed fruits and vegetables:** Vegetables stewed in their own juice, stewed fruit, potatoes and oatmeal, the special (Hippocrate's) soup, saltless rye bread, oatmeal.

**Saltless:** All must be prepared fresh and without added salt.

After the first 6-12 weeks, some who feel they need it may wish to add the following dairy products: cottage cheese (saltless and creamless), yogurt from skimmed milk, buttermilk. (Charlotte Gerson says it is now extremely difficult to find cottage cheese, yogurt, and buttermilk which does not have added salt; foods with added salt must not be used.)

[*Our note:* Although the above paragraph contains the recommendation of the Gerson Institute, the reader should be reminded of the danger of returning to cancer-causing dairy products.]

The restricted Gerson diet provides fresh, natural foods, with no sodium and the highest amount of potassium. It stimulates the elimination of toxic substances from the body.

## 2.2.2 More on foods to use

Here is additional information on the foods to be used while on the Gerson program:

**Fresh fruit:** Fresh (never canned) apples, grapes, cherries, mangoes, peaches, oranges, apricots, grapefruit, bananas, tangerines, pears, plums, melons, papayas, persimmons, etc.

**Stewed fruit:** Pears and plums are more easily digested when stewed. Other freshly stewed fruit may also be used.

**Dried fruit:** All types of dried fruit (apricots, peaches, raisins, prunes, mixed fruit) are acceptable - but never sulphured! Wash, soak, and then stew dried fruit before eating it.

**Flax Oil:** Flaxseed oil is very beneficial. - But you must not use any other kind of oil!

**Flavorings:** To vary the flavors, you may also use very small quantities of the following (*but no others!*):

Allspice, anise, bay leaves, coriander, dill, fennel, mace, marjoram, rosemary, sage, saffron, tarragon, thyme, sorrel, summer savory.

Spices must be used sparingly, since they may counteract the healing reaction.

In larger amounts, chives, onions, garlic and parsley can be used. They often help flavor the food.

**Raw vegetables:** The following raw vegetables may be included in salads. They can be chopped, mixed, finely grated, or eaten separately:

Mix raw into salads: apples with carrots, lettuce, chicory, tomatoes, escarole, cauliflower, romaine, radishes, scallions, endive, knob celery, chives, green peppers.

Tomatoes are acceptable.

Question: "Are tomatoes okay?"

Answer: "Tomatoes are okay."

*Max Gerson, A Cancer Therapy, p. 414<sup>15</sup>.*

**Salad dressing:** Here is an optional salad dressing: Mix 2 tablespoons lemon juice, 2 tablespoons water, 1 tablespoon brown sugar, a little diced onion, grated horseradish (not bottled).

---

<sup>15</sup>**Livro:** "A Cancer Therapy - The Cure of Advanced Cancer by Diet Therapy", **Capítulo 34:** "Atualizações: Appendix I, II and III", **Item 34.2:** "Appendix II: The cure of advanced cancer by diet therapy - Max Gerson", **Parágrafo 53.**

You will find 35 pages of recipes at the back of the *Gerson Primer*, published by the Gerson Institute.

**Organic foods:** Max Gerson and the Gerson Institute urge that all fruits and vegetables be organic.

“Cancer is not a local but a general disease, caused chiefly by the poisoning of foodstuffs prepared by modern farming and food industry.”

*Max Gerson, A Cancer Therapy, p. 199<sup>16</sup>.*

“Have vegetables and fruit for the diet and juices been organically grown? Nutrient content of organic produce is often several times that of non-organic produce. Insecticides can stop healing.”

*Norman Fritz, added note in 3rd ed.,  
A Cancer Therapy, p. 218<sup>17</sup>, item 13 of check list.*

### 2.2.3 Foods to eat each day

- Here is additional helpful information:

**Fruit and vegetable juices:** Fruit and vegetable juices (in their raw form and in the soups) must be eaten each day - at least in the quantities ordered by the physician. Sometimes doing so may present some difficulties during the reaction period.

**When reactions occur:** When these reactions occur, the patients sometimes ask for raw, uncooked foods or apple juice and raw, grated apples without peel, mixed with finely mashed bananas (whipped with a fork into a light puree).

Because of the hypersensitivity of the intestinal tract, even the raw juices must sometimes be mixed with a thin, filtered oatmeal - sometimes mixed half and half. Later, only 2 tablespoons of the liquid oatmeal should be added, until the reaction period is overcome.

**Apples:** Raw, grated apples should be taken in large quantities. When eaten raw, it is best to peel them to ease digestion and reduce gas formation. Apples should be eaten in every form: raw, finely grated, baked, apple sauce, or stewed with raisins.

**Carrots:** Carrots should be used raw, finely grated (best with the same amount of raw grated apple). They should also be cooked, lightly baked, and sprinkled with honey or bread crumbs.

**Potatoes:** Potatoes should be baked in the oven, with their skins on, until they are soft or mashed. The baked potatoes can also be put in a potato salad, with celery salad and lemon juice dressing. They may be eaten with apple sauce or yogurt (when it is all right to eat yogurt).

**Potato salad:** Peel; slice; and, while hot, add dressing to freshly baked potatoes.

**Sweet Potatoes:** Sweet potatoes are permitted once a week (no color added).

**Oatmeal:** Oatmeal is a very good food, and a large portion can be eaten daily. Use old-fashioned oats: Scotch, Irish, or plain Quaker Oats. Use  $\frac{1}{2}$  cup oatmeal to 1 cup water. Cook slowly in water until done (about 5 minutes).

---

<sup>16</sup>**Livro:** “A Cancer Therapy - The Cure of Advanced Cancer by Diet Therapy”, **Capítulo 26:** “The Practice of the Therapy”, **Item 26.2:** “Summary for the practice of the therapy”, **Parágrafo 4.**

<sup>17</sup>**Livro:** “A Cancer Therapy - The Cure of Advanced Cancer by Diet Therapy”, **Capítulo 30:** “Most Frequent Mistakes of Patients in the Application of the Treatment”, **Item 30.1:** “Check list for a cancer patient on the gerson therapy”.

Eat oatmeal (no milk) with any of following: raw grated apples, brown sugar or honey, blackstrap molasses, stewed prunes, apricots, bananas, apple sauce, raisins, peaches, etc.

**Bread and flour products:** Use some saltless rye bread each day. The following can occasionally be used: brown or wild rice, potato flour, corn starch, barley, lentils, bread crumbs (grate unsalted pumpernickel leftovers).

**Sugar and sweetening:** raw sugar, brown sugar (be careful: not the kind which is white sugar plus added molasses), maple sugar, syrup, light honey, un sulphured molasses.

## 2.2.4 Sample menu

Here is a sample one-day menu. You may wish to adapt it to your personal prescription:

### Breakfast

- 1 glass juice
- Large portion oatmeal
- Bread, dark rye, toasted or plain, with prescribed honey or stewed fruit (no preservatives)

### Lunch

- Salad (raw food)
- 1 glass warm soup
- 1 glass juice
- Large baked potato
- Vegetables, cooked
- Dessert: fruit, stewed or raw

### Supper

- Salad (raw food)
- 1 glass warm soup
- 1 glass juice
- Large baked potato
- 2 vegetables, cooked
- Dessert: fruit, stewed or raw

## 2.2.5 Sodium-potassium ratios

There is a sodium-potassium chart in Gerson's book (*A Cancer Therapy*, pp. 225-229<sup>18</sup>) which is worth studying. You will discover that the good food has more potassium than sodium *and all the junk food has more sodium than potassium!* It is quite obvious that God's plan was that we eat more potassium than sodium.

Here are but a few at the top of the list (from A to C), which are low in sodium and high in potassium. Each of them is a natural product from the garden:

Food	sodium / potassium*
Dried apricot	11s / 1,700p
Banana	0.5s / 420p
Dried navy beans	1s / 1,300p
Fresh green beans	0.9s / 300p
Frozen green beans	2s / 110p
Fresh lima beans	1s / 680p
Raw beets	110s / 350p
Low sodium commercial bread	76s / 200p
Fresh broccoli	16s / 400p
Frozen broccoli	13s / 250p
Fresh brussels sprouts	11s / 450p
Frozen brussels sprouts	9s / 300p
Cabbage	5s / 230p
Cantaloupe	12s / 230p
Caraway seed	17s / 1,400p
Dry rolled oats cereal	2s / 340p

\*Note: All units are given in milligrams of the element per 100 grams of the substance being tested.

Here are a few at the top of the list, which are high in sodium. They all are processed in some way:

---

<sup>18</sup>**Livro:** "A Cancer Therapy - The Cure of Advanced Cancer by Diet Therapy", **Capítulo 32:** "Tables", **Item 32.2:** "Sodium and potassium content", **Parágrafo 2.**

Food	sodium / potassium*
Anchovy paste	9,800s / 200p
Baking powder	10,000s / 150p
Heinz baked navy beans with tomato sauce	400s / 140p
Canned green beans	410s / 120p
Canned lima beans	310s / 210p
Frozen lima beans	310s / 580p
Corned beef	1,30s / 60p
Dried beef	4,300s / 200p
Raw lean, koshered beef	1,600s / 290p
Cultured buttermilk	130s / 140p
Candy bars	220s / 150p
Canned carrots	280s / 110p
Tomato catchup	1,300s / 800p
Salt celery	28,000s / 380p
All-Bran cereal	1,400s / 1,200p
Corn flakes cereal	660s / 160p
Wheat flakes cereal	1,300s / 320p

\*Note: All units are given in milligrams of the element per 100 grams of the substance being tested.

Here are a few other samples of processed foods. You may have thought that some of them were safe:

Food	sodium / potassium*
Ry-Krisp (probably salted)	1,500s / 600p
Cottage cheese	290s / 72s
Popped, oiled, salted popcorn	2,000s / 240p
Graham crackers	710s / 330p
Jell-O	330s / 210p
Mayonnaise	5,90s / 25p
Meat extract	11,000s / 6,000
Canned mushrooms	400s / 150p
Mustard paste	1,300s / 130p
Oleomargarine	1,100s / 58p
Green, pickled olives	2,400s / 55p
Dill pickles	1,400s / 200p
Pretzel (one)	1,700s / 130p
Rice flakes	720s / 180p

\*Note: All units are given in milligrams of the element per 100 grams of the substance being tested.

For your information, table salt (pure NaCl) is 39,342s, and baking soda (pure  $NaHCO_3$ ) is 27,373s. As with the entire chart, these figures are based on mg./100 gm. (milligram of the element per 100 grams of the substance being tested).

It is of interest that processed breakfast cereals are very high in sodium. Yet people value them; no preparation, pour on the sugar, add some milk, swallow them down quick, rush off to work.

“Throughout the survey, it was noted that variations in sodium content were much wider than in potassium content. This was true not only for different products, but for different samples of the same product.”

So sodium content of junk foods can be much higher than indicated on the food charts! It is easy at the processing plant to dump in more salt - and sell more of the product. The consumers love it.

## 2.2.6 Medications

The following special substances (called “medications” by the Gerson Institute) are taken to help the nourishing, cleansing, and healing process. (*Medications - 2* is to be found on pages 27-28.)

**Flax oil: Dosage:** During the first month of therapy, take 2 tablespoons a day; thereafter take 1 tablespoon.

Store the *Barlean's Flax Oil* bottle in the freezer. When taking it out, set it on the table for about 20 minutes. Then shake it, and pour off about 1 cupful into a 1 pint wide-mouth glass jar. Put the *Barlean's* bottle back in the freezer, and keep the pint jar in the refrigerator until it is used up.

Make sure your source of supply keeps their flaxseed oil refrigerated. If necessary, order it by mail.

*Barlean's Flax Oil* is the best brand, and is cold-pressed (address given later in *Gerson Supply Sources*.) It is the very best dietary oil there is, and is sometimes referred to as linseed oil. However, the linseed oil available in a paint store is not what you want to eat! (Although made from flax seed, it is a crude, dirty, oxidized product, with added poisonous chemicals.) Flaxseed oil is the best source of lenolenic acid, and helps the body lower cholesterol and utilize vitamin A.

**Potassium:** This is a 10% solution of potassium. *Dosage:* First 3-4 weeks: 4 tsp. solution in each of 10 orange, carrot/apple, and green-juice cups daily. (10 x 4 tsp. daily [=10 times a day, 2 tsp. each time]).

Thereafter: 10 x 2 tsp. for 20 weeks, then 8 x 2 for 12 weeks; then 6 x 2 for the duration of treatment.

Here is how to work with it at home: Place one 100-gm. container of potassium compound salts into a one-quart glass jar, and fill to the top with distilled water. Store the bottle in a dark place. It does not need refrigeration.

Patients with chronic illnesses showed a marked decrease of potassium, one of the substances important in muscle contraction. Gerson found that increasing the potassium in the body was extremely important in dissolving tumors. Those who are seriously ill need many months, sometimes as much as two years, to restore normal potassium content to the vital organs. For more on this, see Gerson's. *Cancer Therapy*, pp. 207-208.

“Then we gave the patients large amounts of potassium. It took about 300 experiments until I found the right potassium combination. It is a 10% solution of potassium gluconate, potassium phosphate (monobasic), and potassium acetate. From that solution the patient is given four teaspoons 10 times a day in juices. That large amount of potassium is introduced into the body.”

---

<sup>19</sup>**Livro:** “A Cancer Therapy - The Cure of Advanced Cancer by Diet Therapy”, **Capítulo 32:** “Tables”, **Item 32.2:** “Sodium and potassium content”, **Parágrafo 4.**

<sup>20</sup>**Livro:** “A Cancer Therapy - The Cure of Advanced Cancer by Diet Therapy”, **Capítulo 34:** “Atualizations: Appendix I, II and III”, **Item 34.2:** “Appendix II: The cure of advanced cancer by diet therapy - Max Gerson”, **Parágrafo 30.**

**Niacin: Dosage:** 50 mg. at least 6 times daily for 6 months. In advanced cases, Gerson used 50 mg. every hour around the clock.

It is very important that niacin be taken from the beginning in sufficient amounts, without too much interruption, and only slowly diminished (not before 5-6 months). It helps restore glycogen into the liver cells, aids protein metabolism, and opens small arteries and capillaries. It also increases the electrical potentials in the cells.

This is a B vitamin, and very important in the elimination of cancer. Do not substitute niacinamide for it! Niacinamide does not accomplish the needed results. Reactions (flushing, hot, red skin for a couple minutes, caused by the niacin) are temporary and harmless. Possible minor bleeding is no cause for concern, - but it should be discontinued during menses or in case of hemorrhage. (To avoid heat reactions, dissolve the tablet on the tongue after a meal or take in a glass of juice.)

“The results can be further improved by adding niacin which dilates the capillaries and in that way is helpful in the exchange between serum and cells. Niacin is also necessary for the function of the oxidation system.”

*Max Gerson, A Cancer Therapy, p. 32<sup>21</sup>.*

**Vitamin C (ascorbic acid):** This is used in the Gerson therapy during infections. A crystalline (powdered) form such as *Bronson's* is preferred. Supplemental vitamin C should not normally be necessary, since there is so much in the Gerson diet. A daily dose of 1 to 1  $\frac{1}{2}$  grams are permissible.

**Royal Jelly:** This is optional. *Dosage:* 100 mg. in capsules or honey,  $\frac{1}{2}$  hour before breakfast. Do not take with hot food.

**Bee Pollen: Initial dosage:**  $\frac{1}{2}$  tsp. per day. This can be used in treating cancer from about the 10th to 12th week. Non-cancer patients may start earlier. Some may have allergies to bee pollen.

## 2.2.7 Foods temporarily forbidden

According to the Gerson Institute, the following should be forbidden before the 6th to 8th week of full treatment: milk, cheese, butter, fish, meat, eggs.

[*Our comment:* It would be better to avoid meat and dairy products entirely, since livestock and chickens frequently have cancerous masses in their bodies. As he concurred in the above view about animal proteins, in his lengthy research work, Max Gerson recognized that meat and dairy products can intensify and even cause a regrowth of cancer. Consider these three statements:]

“As for nutrition, it is necessary to keep away all substances from the sick body which can produce allergic and other biologically stronger reactions (such as fats, animal proteins, hormones and vitamins - except vitamin C and niacin), because they counteract the normal allergic healing reaction which is so necessary in the beginning to kill the tumor tissue.”

*Max Gerson, A Cancer Therapy, pp. 136-137<sup>22</sup>.*

“Further experiments showed that cod liver oil and other oils and fats, including egg yolks and cream also had a carcinogenic capacity - in these advanced cases.”

---

<sup>21</sup>**Livro:** “A Cancer Therapy - The Cure of Advanced Cancer by Diet Therapy”, **Capítulo 4:** “Development of the Combined Dietary Regime in Cancer (Survey)”, **Parágrafo 6.**

<sup>22</sup>**Livro:** “A Cancer Therapy - The Cure of Advanced Cancer by Diet Therapy”, **Capítulo 18:** “Role of Allergy in the Healing Process of Cancer”, **Parágrafo 7.**

“She had cancer of the breast which regrew. Every time the family insisted that she was ‘so much down’ [in weight]. She weighed only 78 pounds. She was skin and bones and they wanted me to give her egg yolks. I gave her small amounts of egg yolks - the cancer regrew. Then they insisted that I give her meat, raw chopped meat. I gave her this and the cancer regrew. The third time, they wanted me to give her some oil. I gave her the oil and the third time the cancer regrew. But, anyway, three times I could eliminate the cancer again and cure.”

## 2.3 Food preparation

### 2.3.1 Purchase of food

Do not buy carrots, fruits, or vegetables which are in plastic bags. Food-grade plastics often have added preservative chemicals to keep the food “looking fresher.” You will find this in items in plastic that are prepacked in small quantities. Do not buy potatoes or oranges to which color has been added.

Try to buy “organic” produce. Sprayed insecticides (poisons) cannot be removed by washing, as they have been taken up by the roots, from the soil, and absorbed into the plant and fruit.

### 2.3.2 Kitchen equipment to use

Stainless steel, glass, enamel, earthenware, cast iron, and tinware is acceptable.

Use the Norwalk juicer or two other machines which do the same task: a grinder (triturator) which grinds the vegetables and fruit, and a press (preferably stainless steel) which presses juice from the ground pulp. (A detailed list of sources will be found later under *Gerson Supply Sources*.)

### 2.3.3 Kitchen equipment not to use

Do not use pressure cookers or steam cookers, aluminum pots or pans. Avoid anything else made of aluminum.

Do not use a centrifugal juicer (the kind which whirl in a circle, throwing the juice outward). Do not use one-piece juicers such as liquifiers, centrifuges, juice mixers, or juice masters. These cause the juice to be oxidized, and render it unfit for the remedial treatment of cancer. (But centrifugal juicers are permitted by Gerson Institute for non-cancerous conditions.)

“They had to drink orange juice, grapefruit juice, and apple and carrot juice. This had to be produced in a special machine - a grinder and a separate press - because I found that in centrifugal juicers or liquefiers, I couldn’t obtain the kind of juice which cured patients.”

---

<sup>23</sup>**Livro:** “A Cancer Therapy - The Cure of Advanced Cancer by Diet Therapy”, **Capítulo 31:** “Some Failures Medication: Not Specific”, **Parágrafo 7.**

<sup>24</sup>**Livro:** “A Cancer Therapy - The Cure of Advanced Cancer by Diet Therapy”, **Capítulo 34:** “Atualizations: Appendix I, II and III”, **Item 34.2:** “Appendix II: The cure of advanced cancer by diet therapy - Max Gerson”, **Parágrafo 15.**



“At first, I had thought that liquefiers would be the most wonderful thing. All the material was there, nothing was lost. But it didn’t work. Then I found out through a physicist that in the liquefier, in the center, there is positive electricity and in the fluid there is negative electricity. This electricity kills the oxidizing enzymes. And that is also true for the centrifugal juicer and the other apparatus. The juice must therefore be made by a grinder and a separate press - if possible, made of stainless steel.”

*Op. cit.*, p. 406.

“Centrifugal machines in which air has insufficient access to the grinding process, cannot be used. When the grinding wheel rotates against a resistance with insufficient access of air, positive electricity is produced and induces negative electricity on the surrounding wall. The exchange of the positive and negative electricity kills the oxidizing enzymes and renders the juice deficient.”

*Max Gerson, A Cancer Therapy*, p. 217.

### 2.3.4 Juices

Juices must be prepared fresh. It is best if they are drunk the same day. If not drunk immediately, the juices must be quickly refrigerated. Place the refrigerated juices in 8-oz. screw-on glasses. This reduces oxidation to the minimum. Start with smaller amounts of juices, and gradually increase the quantity.

Here are the types of juices which can be used, and always in 8-oz. servings: Apple and carrot / green leaf / orange / grape / grapefruit / tomato / apple. *Never place Lugol’s solution in green leaf juice.*

How fresh must the juice be? Some Gerson sources say it can be stored in the refrigerator in pint jars for three days. However, for terminal cases which are being treated, the situation is far different:

“We often find that patients are helped by persons who have to leave the house to go to work at a certain time and, therefore, prepare most of the day’s juice supply in advance and the evening supply upon their return home. This renders the juices largely ineffective, for the following reasons:”

(1) “Juices consist of living matter with active ferments, fast neutralizing oxidizing enzymes, which are most necessary for the sick body.”

(2) “The body needs an equilibrium of active oxidizing enzymes, supplied throughout the day. These cannot be maintained active except by freshly pressed juices, given at hourly intervals.”

*Max Gerson, A Cancer Therapy*, p. 216<sup>26</sup>.

---

<sup>25</sup>**Livro:** “A Cancer Therapy - The Cure of Advanced Cancer by Diet Therapy”, **Capítulo 34:** “Atualizações: Appendix I, II and III”, **Item 34.2:** “Appendix II: The cure of advanced cancer by diet therapy - Max Gerson”, **Parágrafo 17.**

<sup>26</sup>**Livro:** “A Cancer Therapy - The Cure of Advanced Cancer by Diet Therapy”, **Capítulo 30:** “Most Frequent Mistakes of Patients in the Application of the Treatment”, **Parágrafo 6.**

### 2.3.5 Preparation of carrot and apple juice

Use apples and carrots in equal portions. Wash apples, without peeling them. Cut and remove core with seeds. Wash carrots, but do not scrape them.

Then run them through a grinder and, after that, through the press.

If the patient has to go back to work, apple and carrot juice *only* may be taken and kept in a thermos no longer than 2 to 3 hours (when the juice cannot be kept in a refrigerator).

Certain types of apples juice better and produce better results:

“Tart apples (McIntosh, pippin, Granny Smith, winesap, etc.) [should be] used for juices when possible, rather than ‘delicious’ apples.”

*Norman Fritz, 3rd ed., A Cancer Therapy, p. 218<sup>27</sup>, last item of check list.*

### 2.3.6 Norwalk instructions

#### SUPPLIES -

In addition to *Norwalk equipment*: 2 or 3 1 qt pyrex cups (1 for pulp and 1-2 for juice [if not working rapidly at multiple duties, will only need 2 cups, total]), *baking tray* to lay cloths in, *carrot tray*, *wet rag* or two for spills, *washed vegetables* (assuming here only carrots), *juice jars*, 2 *zip-lock bags*

#### ASSEMBLY (pp 6-8) -

1. Install and arrange everything
  - Install grid on top and push to back of grid slide

2. Plug in / Turn on switch

#### PULPING -

1. Fill 1 qt (4-cup) pyrex cup with pulp (will make about 3 cups of juice). As push carrots through:
  - Keep top covered with hand or pusher (especially on first item in!)
  - Do not push too fast
  - Push only halfway down (otherwise next item pushed in will splash out)

When done, leave pusher in tube. Keep top covered till motor is turned off! (Can also place plastic shower cap over tube top)

#### PRESSING (pp 9-16) -

- Put pulp into cloth (much easier to work with than bag, although bag provides better protection from aeration)

---

<sup>27</sup>**Livro:** “A Cancer Therapy - The Cure of Advanced Cancer by Diet Therapy”, **Capítulo 30:** “Most Frequent Mistakes of Patients in the Application of the Treatment”, **Item 30.1:** “Check list for a cancer patient on the gerson therapy”.

- Put 1 cupful of pulp from pyrex cup into center of 1 cloth (It is equivalent to 2 large carrots, 2 apples, or 6 celery stalks)
  1. Open two clean cloths in clean baking tray, one on top of the other
  2. Pour in about 1 cupful pulp, from pyrex cup, into center section of cloth
  3. Fold over left third
  4. Fold over right third
  5. Fold up bottom third
  6. Fold down top third
  7. Turn folded cloth upside down: Flip back and over (Flip front edge up and back)
  8. Place folded cloth on press base (“press plate”).

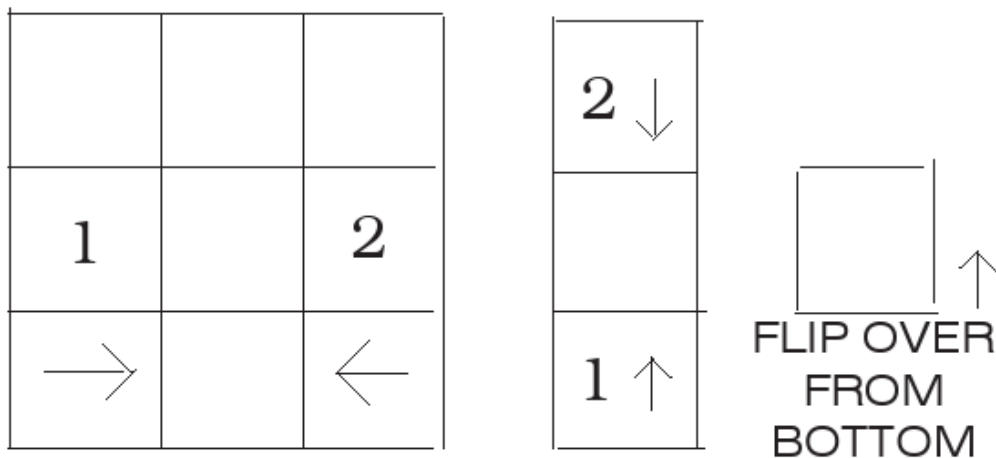


Figure 2.1: Enfold in cloth, pulp to make juice

- Always press two cloths at a time (not 1 or 3)
- Lay cloths in center of press base (on bottom press plate), never to the side (or base plate will jam tight to top)
- Pour second cupful into second cloth
- Press both cloths
  1. Lift up press lever (machine must be turned on to do this) *Pressing begins*
  2. Count to 10 seconds (never more than 10 seconds!)
  3. Lower lever a couple inches
  4. Raise it second time, count, lower partway
  5. Remove cloths from press, open them and lay in tray
  6. If planning to store juice: Immediately pour 1 qt pyrex cup of juice into small 8-oz jars (each equals one serving). For cancer patients, not over 2 hours. For non-patient use: refrigerate for up to 3 days (not over 2 days better) or put into freezer for several months (leave ample room at top for expansion)

- Repeat folding and pressing of two more cloths
- Repeat till juicing and pressing is finished, and have desired amount of juice

### **CLEAN UP** (pp 21-23) -

1. Turn off motor! Then unplug machine
2. Top priority is to clean pusher, cloths, and cutter first (If work rapidly, can clean anything first)
  - (a) Remove pusher, rinse rather quickly in COOL water, dry it immediately (Do not leave it in water!)
  - (b) Empty, rinse cloths, then put in hot (not boiling) water, add little soap, place cloths in and let soak for 30-60 minutes
3. Then clean machine parts
  - (a) Remove parts:
    - Remove juice tray, feed pan, grid holder, and grid
    - Loosen wing nuts and remove housing
    - Remove cutter by grasping firmly with cloth
  - (b) Clean parts (p. 21) with hot water and soap
    - Clean cutter first, thoroughly inside and out
    - Wash other parts and machine
  - (c) Conclude with cold or warm water rinse
4. Store parts
  - Cutter in zip-lock bag
  - Grid and holder in zip-lock bag
  - Put rest onto machine (or store some loose parts elsewhere)

The procedure is finished

### **OILING PUSHER** -

Every week or so (or whenever it feels dry), oil the wooden pusher:

1. Place 2 tbsps. olive oil into bowl (Olive oil is best because less likely to later become rancid on pusher)
2. With fingers, place oil all over pusher.
3. Set pusher upright in bowl, and leave for a day or two (oil will soak into pusher)
4. Wipe oil off bottom, and store pusher

To return a swollen pusher to normal size: Contact Norwalk

### **CUTTER ADJUSTMENT** -

Use  $\frac{1}{4}$  inch hex (allen) key wrench (clockwise to tighten)

Oil inside if difficult to remove

### 2.3.7 Preparation of citrus juices

Only use a reamer type juicer of glass, plastic, porcelain, or an electric machine to squeeze juice. Do not use any juicer into which the half orange is inserted with the skin. This is because the skin is also pressed out, it emits harmful fatty acids and aromatic substances from its surface. Do not use an aluminum juicer.

### 2.3.8 Preparation of green leaf juice

Obtain as many of the various kinds of green leaves, listed below, as possible. But do not use any other types.

Lettuce, red cabbage leaves (2-3 leaves), beet tops (young inner leaves), swiss chard, escarole, endive, romaine, green pepper ( $\frac{1}{4}$  of small one). [*Our note:* Beet greens and swiss chard have a lot of oxalic acid, whereas kale and collards are both very nutritious - have less oxalic acid. For some reason, unknown to us, the Gerson Institute favors the first two and not the second two. Kale and collards are especially nutritious garden greens.]

When grinding, add 1 medium apple for each glass of green juice.

**The grinding process:** Grind twice (unless grinder has a fine grind, able to grind fine and almost liquify the pulp), press, and drink immediately. (The Norwalk has the correct grid, so grinding needs be done only once.)

**The pressing process:** Take 1 or 2 coarsely woven cloths-nylon, about 12 inch square. Place a cupful of pulp into center of the moistened cloth and fold in thirds in both directions; then turn it upside down, lay in press, and let it squeeze out the juice.

Rinse the cloths after each juice preparation. Each night boil the cloths in soapy water, and rinse thoroughly. Keep the machine clean.

*On page 38, the present writer, who has a Norwalk juicer and regularly uses it, presents his own findings on how to use this valuable machine. Even better: Contact the Gerson Institute and purchase their video (by Charlotte Gerson) on how, in the kitchen, to prepare the vegetables and make salad, special soup, and the juices in a Norwalk.*

### 2.3.9 Preparation of cooked vegetables

Vegetables must be cooked slowly, over an open flame, and without the addition of water. This slow cooking process is important. It preserves the most nutrients and flavors, and makes them more digestible. Fast cooking bursts the cells and causes the minerals to leave their colloidal composition and become more difficult for the intestines to absorb.

A steel mat may be placed over the fire to reduce the heat still more, and prevent the pan from burning. (Asbestos mats are toxic and are best not used.)

If more fluid is needed in the pan, add a little of the special Hippocrates' soup, tomatoes, or apple slices. Do not use spinach water, for it has too much oxalic acid. Stew tomatoes, leeks, and onions in their own juices because they have so much residual fluid. Cook potatoes in their jackets in water; do the same with red beets.

Carefully wash and clean all vegetables. [And considering they are organic,] Do not peel or scrap them, for important mineral salts are just beneath the surface.

The cooking pot must not be aluminum, must close tightly, have heavy, well-fitting lids, and be tightly covered - to prevent the escape of steam.

When raw fruit or vegetables are shredded or finely grated, they must be used fresh and as quickly as possible. Do not store raw food after it has had any kind of preparation done to it.

Patients should only have freshly cooked foods. (But we are also told that, if the food has been cooked (soup and fruit), it may be kept in the refrigerator for up to 48 hours.)

“Cooked vegetables must be prepared in an appetizing manner. It must be borne in mind that a complete change in the accustomed taste is involved; therefore, vegetables must be prepared with much care and imagination. It is not possible *just to omit* water, salt, fat, condiments, etc. Vegetables can be made tasty by means of fresh and dried herbs and different fruits.”

*Max Gerson, A Cancer Therapy, p. 217<sup>28</sup>.*

### 2.3.10 Preparation of special soup (Hippocrates' soup)

For one person, use a 2-quart pot and the following vegetables, then cover with water:

- 1 medium celery knob (If not in season, use 3-4 stalks of branch celery; pascal celery is preferable.)
- 1 medium parsley root
- 2 small leeks (substitute 2 small onions)
- 2 medium onions
- *Little parsley*
- 1½ lbs. tomatoes or more
- 1 lb. potatoes

Garlic may be used at liberty for cooking or squeezed fresh into hot soup.

Do not peel any of these vegetables, but wash and scrub them well, cut them coarsely, cook slowly for 3 hours, then put through a food mill in small portions; scarcely any fibers should be left. Vary the amount of water used for cooking according to taste and desired consistency.

Let the soup cool before storing. Keep it well-covered in the refrigerator for no longer than 2 days. Warm up as much as needed each time.

“Hippocrates . . . gave these patients a special soup. I should like to tell you, we use that soup at the present time! That soup from that book, out of the practice of Hippocrates - 550 years before Christ! . . . He [Hippocrates] had the idea that the patient has to be detoxified with the soup and with some enemas and so on.”

*Max Gerson, A Cancer Therapy, p. 404<sup>29</sup>.*

The Gerson Institute recommends purchasing a *Foley Food Mill*, obtainable from the houseware department at a store, for making the special soup.

---

<sup>28</sup>**Livro:** “A Cancer Therapy - The Cure of Advanced Cancer by Diet Therapy”, **Capítulo 30:** “Most Frequent Mistakes of Patients in the Application of the Treatment”, **Parágrafo 10.**

<sup>29</sup>**Livro:** “A Cancer Therapy - The Cure of Advanced Cancer by Diet Therapy”, **Capítulo 34:** “Atualizações: Appendix I, II and III”, **Item 34.2:** “Appendix II: The cure of advanced cancer by diet therapy - Max Gerson”, **Parágrafo 9.**

### 2.3.11 Preparation of peppermint tea

Add one tablespoon dried peppermint leaves to 2 cups (1 pint) boiling water. Let it boil for 5 minutes, then strain. Add brown sugar or honey and/or a little lemon juice, to taste.

This should be used when food is not well-tolerated, in case of indigestion or during reaction period (flare-ups), nausea, or gas.

### 2.3.12 Medications

Here are the other special substances (called “medications” by the Gerson Institute) which are taken to help the nourishing, cleansing, and healing process. (*Medications - 1* is listed on pages 22-23.)

**Lugol’s Solution: Dosage:** First 3-4 weeks only: 3 drops in each of 6 orange and carrot/apple juices (6 x 3 daily). Never put Lugol in green juice!

This is the way that an additional intake of iodine is obtained by the body. Lugol’s is always used in half-strength, and only during the first weeks of therapy. Lugol’s solution contains 5% iodine and 10% potassium iodide in water.

*In order to fight cancer, it is vital that both iodine and potassium be increased in the body.* Iodine (its chemical name is “I”) is part of the positive minerals traveling to the negative pole, or negative tissues, while potassium (K) is the leading mineral of the negative group traveling to the positive pole or tissues. To help the cells function, the minerals must be activated or ionized.

In the Gerson therapy, iodine is administered in two forms: Lugol’s solution and thyroid. A larger dose (as described above) of Lugol’s is favorable in inhibiting any excessive cancer growth. For more information on this, see pp. 205-206 of *Cancer Therapy*, by Gerson.

Read this remarkable testimony:

“At the same time [we gave] 5 times [a day] of one grain of thyroid and 6 times three drops of Lugol’s solution,  $\frac{1}{2}$  strength. That’s 18 drops of Lugol’s which is a large dose. Nobody was observed to develop heart palpitations from that, even if some patients told me that they could previously not take thyroid because they would develop heart palpitation. And all allergies disappeared! Some patients claimed that they could previously not take one teaspoonful of lemon juice or orange juice - they were allergic. But when they are well detoxified and have plenty of potassium, they are not allergic. Allergies and other hypersensitivities are eliminated.”

*Max Gerson, A Cancer Therapy, p. 409<sup>30</sup>.*

“Since 1938, after several setbacks, I have been able to develop a more successful therapy by adding . . . iodine medication, first in organic form as thyroid, and later also in inorganic mineral, in Lugol’s solution . . . Iodine is a decisive factor in the normal differentiation of cells, and can be used in order to counteract the decrease of cell differentiation as seen in the cancerous tissues.”

*Max Gerson, A Cancer Therapy, p. 32<sup>31</sup>.*

**Thyroid: Dosage:** First 3-4 weeks only: 5 x 1 grain daily [5 times a day, 1 grain each time]. Dosage is best adjusted by physician. It is generally reduced downward, often frequently. Tachycardia [pulse over 120] may indicate overdosage. Discontinue temporarily during menses.

---

<sup>30</sup>**Livro:** “A Cancer Therapy - The Cure of Advanced Cancer by Diet Therapy”, **Capítulo 34:** “Atualizações: Appendix I, II and III”, **Item 34.2:** “Appendix II: The cure of advanced cancer by diet therapy - Max Gerson”, **Parágrafo 30.**

<sup>31</sup>**Livro:** “A Cancer Therapy - The Cure of Advanced Cancer by Diet Therapy”, **Capítulo 4:** “Development of the Combined Dietary Regime in Cancer (Survey)”, **Parágrafo 5.**

“When introduced into the system, thyroid and Lugol’s solution go immediately into the cancer mass. These ripe [cancer] cells take it up fast and they perhaps grow a little faster but they soak in more with great greed - as much as they can - together with a little bit of sodium, probably. But there isn’t much sodium left. So then these cells pick up potassium and the oxidizing enzymes and die by themselves. You have to realize that cancer cells live essentially on fermentation, but potassium and oxidizing enzymes introduce oxidation. And that is the point at which we can kill cancer cells, because we take away the conditions which they need to continue to live.”

*Max Gerson, A Cancer Therapy, p. 409*<sup>32</sup>.

**Acidol Pepsin:** If you find that you need this, take it before meals, not during or after! These capsules provide supplemental hydrochloric acid, which is needed to help your stomach break down protein foods.

**Pancreatin: Dosage:** 3 tablets 4 times daily or according to need. This amount is later reduced. Some do not tolerate pancreatin well, but most benefit with less digestive trouble, gas spasms, and less difficulty regaining weight and strength.

**Liver Extract (crude) and B<sub>12</sub>:** This is given by injection. *Dosage:* 3 cc liver and  $\frac{1}{10}$  cc B<sub>12</sub> combined in a single syringe, injected into *gluteous medius* daily, for 4-6 months or more. [*Our note:* It is best that a professional teach you how to do this. A person needs to know where to inject into the buttocks, because a vein or the sciatic nerve might be penetrated! See “*Instructions for Giving Injections*,” later in this section. Those who go to the Gerson Institute are carefully taught how to do this, before they leave for home.]

Vitamin B<sub>12</sub> helps amino acids combine to form proteins, a function which is not working properly in people with cancer.

Liver was added to the formula because of the continually lowered quality of fresh fruits and vegetables. (*Our note:* So liver is not needed to save the lives of terminal patients, *if good quality products* can be obtained.)

“Dr. Max Gerson added raw liver juice to his dietary therapy in 1950 to compensate against a downturn in nutritional qualities of fresh fruits and vegetables, on which his therapy had relied since its introduction in the early part of the century. Modern fertilization and pest control techniques have resulted in foods toxic and inferior to those grown by more intelligent methods.”

*Appendix III, A Cancer Therapy, p. 421*<sup>33</sup>.

*Special note:* In October 1989, the Gerson Institute stopped using raw liver because it was so contaminated with bacteria. Desiccated liver tablets now replace it, taken with carrot juice.

“Carrot juice replaces liver juice in all U.S. patient schedules, each glass supplemented by two 500 mg. desiccated liver tablets and two tablets of spirulina.”

*Appendix III, A Cancer Therapy, p. 421.*

---

<sup>32</sup>**Livro:** “A Cancer Therapy - The Cure of Advanced Cancer by Diet Therapy”, **Capítulo 34:** “Atualizações: Appendix I, II and III”, **Item 34.2:** “Appendix II: The cure of advanced cancer by diet therapy - Max Gerson”, **Parágrafo 31.**

<sup>33</sup>**Livro:** “A Cancer Therapy - The Cure of Advanced Cancer by Diet Therapy”, **Capítulo 34:** “Atualizações: Appendix I, II and III”, **Item 34.3:** “Appendix III: Discontinuing the raw liver juice for gerson patients”, **Parágrafo 6.**



**Coffee enemas: Dosage:** first six weeks minimum: every 4 hours. While lying on right side, retain for 12-15 minutes. For limited periods of time, where there is pain, these enemas may be used as often as every two hours. However, physician should monitor serum electrolytes frequently. (See three sections below: *Coffee Enemas*, *Preparing the Enema Mixture*, and *Taking the Enema*.)

**Castor oil: Dosage:** Every other day, take 2 tbsp. by mouth, and five hours later a castor oil and soap enema. Later, as necessary or as prescribed. (See *Taking the Castor Oil Enema*, below.)

**Other Gerson-prescribed medications:** There are three other items which Gerson physicians may prescribe, in order to assist the patient in absorbing food nutrients, or cleansing the tissues. These include Acidol (hydrochloric acid), ox bile (a liver aid), and Ion Min (a clay powder). These Gerson medicines are used to aid the body in absorbing nutrients and expelling toxins. Because they are medicines, later they will no longer be needed. People who are well do not take medicine.

**Lab tests:** Blood chemistry, Complete blood count, T3, T4 [T3 and T4 are thyroxin tests], Urinalysis. All tests should be taken before beginning treatment and at 4-6 week intervals for at least the first 6 months. Test results may be affected by healing reactions and flare-ups.

If you are a Gerson Institute patient, mail or fax copies of all blood works to them. Details are explained in the *Gerson Primer*.

**Medications prescribed by other physicians:** You may be taking medications prescribed by regular physicians. It is recommended that you not abruptly discontinue any medications you were taking prior to using the Gerson therapy. In certain cases, Gerson-trained physicians will advise gradual discontinuance.

## 2.4 Detoxification

### 2.4.1 Physiology of coffee enemas

Preparing and taking a coffee enema will be discussed just after this section. Here is the physiological effect of a coffee enema:

“The effect is an increased production of bile, an opening of the bile ducts and greater flow of bile. At the start of the treatment and during flareups, the bile contains poisons, produces spasms in the duodenum and small intestines, and causes some overflow into the stomach, with resultant feelings of nausea or even vomiting of bile. In these cases, great amounts of peppermint tea are necessary to wash out bile from the stomach. Thereafter patients feel better and more comfortable.”

*Max Gerson, A Cancer Therapy.  
(A Cancer Therapy, p. 191<sup>34</sup>.)*

It is an interesting fact that coffee, when drunk by mouth, has a totally different physiological effect on the body, - one which is quite negative.

“A cup of coffee taken by mouth has an entirely different effect . . . It heightens the reflex response, lowers the blood pressure, increases heart rate, perspiration, causes insomnia and heart palpitation.”

*Max Gerson, A Cancer Therapy, p. 191.*

---

<sup>34</sup>**Livro:** “A Cancer Therapy - The Cure of Advanced Cancer by Diet Therapy”, **Capítulo 25:** “Cancer Diet and its Preparation”, **Item 25.6:** “Enemas”, **Parágrafo 3.**

Max Gerson has found that a diluted coffee solution, taken in the form of a low enema, produces none of the negative physiological effects, named above - which drinking coffee by mouth always does. In connection with this, please note that Gerson and the Gerson Institute always give low enemas, never high colonics, which fill the entire bowel, and only for 12-15 minutes at a time.

“High colonics cannot be administered, because too much of the sodium from the mucous membrane in the colon is washed out.”

*Max Gerson, A Cancer Therapy, p. 194<sup>35</sup>.*

Cleaning out the accumulated poisons in the system is extremely important.

“In the beginning, the most important part of the therapy is an intensive detoxification of the entire body.”

*Max Gerson, A Cancer Therapy, p. 193.*

“In more advanced cases it takes a long time, about one to one and a half years, to restore the liver as near as possible to normal. For the first few weeks or months, the liver has to be considered as weak and unable to resume its normal functions, especially that of detoxification and of reactivation of the oxidizing enzymes. For that reason, it is necessary to help the liver with the continuation of coffee enemas and castor oil treatments in a slowly diminishing degree, according to the advanced condition of the disease. We have to bear in mind that there are still unripe cancer tissues in the body.”

*Max Gerson, A Cancer Therapy, p. 196.*

In practice, Gerson found that the enemas were indispensable, if he wanted to clean out the tumor and totally rid it from the body, while, at the same time, protecting the integrity of the very important liver.

“I lost several patients by *coma hepaticum* [unconsciousness induced by a poisoned liver], since I did not know, and therefore neglected, the vital importance of frequent and regularly continued elimination of poisonous substances, with the help of juices, enemas, etc.”

*Max Gerson, A Cancer Therapy, p. 191<sup>36</sup>.*

The pain-relieving effect of coffee enemas is astounding. The enema removes the poisons from the liver so it, the liver, can better clean the blood (all the blood passes through it every three minutes). It is the accumulated poisons in the system which cause the generalized pain of cancer!

“Difficult as this may be to believe, experience has proved that frequent enemas completely eliminate the need for sedation.”

*Max Gerson, A Cancer Therapy, p. 191.*

---

<sup>35</sup>**Livro:** “A Cancer Therapy - The Cure of Advanced Cancer by Diet Therapy”, **Capítulo 26:** “The Practice of the Therapy”, **Parágrafo 3.**

<sup>36</sup>**Livro:** “A Cancer Therapy - The Cure of Advanced Cancer by Diet Therapy”, **Capítulo 25:** “Cancer Diet and its Preparation”, **Item 25.6:** “Enemas”, **Parágrafo 1.**

## 2.4.2 Preparing the enema mixture

It is very important for all fluids which are placed in the rectum to be sterile. Use only *boiled, distilled* water in making the coffee and for the enema water.

Make sure it is cooled to body temperature before using.

**1 - Here is the Gerson preferred coffee enema recipe:** This recipe is to be used total strength! Do not dilute it!

Take 3 tablespoons of ground (drip) coffee (not instant!) to 1 quart *distilled* water. *Boil* it for 5 minutes, with the lid off. (This drives off oils from the coffee.) Then cover the pan, lower the heat, and simmer an additional 15 minutes. Strain and allow to cool. Add enough *distilled* water to make a full quart. Use at body temperature.

**2 - Alternate coffee recipe:** Instead of a freshly made mixture, this formula uses a coffee concentrate. It is recommended that it only be used as an alternative to the above recipe for convenience when traveling.

Three rounded tablespoons of coffee are to be used per 1 quart enema. A concentrate of correct proportion is prepared in this manner:

1. Place 1 cup (12 rounded tablespoons) fine or drip ground coffee into a sauce pan.
2. Add 1 quart distilled water.
3. Boil 5 minutes, uncovered.
4. Cover, lower heat and simmer 20 minutes or more.
5. Strain into a one-quart jar, allowing the grounds to drain well.
6. Add distilled water, to make a full quart.
7. Mark the jar for convenience with tape or paint, indicating one cup increments.

(Home canning jars have markings.)

This is enough concentrate for 4 enemas (one cup concentrate plus 3 cups *boiled, distilled* per enema). Multiply recipe to prepare additional concentrate at one time. This will keep up to 2 days in the refrigerator.

**Using the coffee concentrate:**

1. Put the following into the bucket:

- 1 Cup (8 oz.) coffee concentrate
- 3 Cups (24 oz.) distilled water

The fluid should be warm enough to make solution body temperature.

Apply the enema, following instructions given just below.

*Be sure to boil all fluids before placing them in the rectum.* The fluid should be given at body temperature.

### 2.4.3 Taking the enema

Here are several brief instructions on the actual taking of the enema and its frequency:

“In practice, it seems necessary to apply frequent coffee enemas, four to six times in 24 hours; in more advanced cases every four hours day and night - or even more in the first two weeks.”

*Max Gerson, A Cancer Therapy, p. 193.*

“Always keep the pot with the distilled water on the warmer. It will not boil and will always be ready.”

“If your bucket’s plastic hose becomes kinked, run a small amount of hot water through it to soften it.”

1. The coffee solution should be body temperature.
2. Run a little of the solution through the tube into the toilet to warm the tube; close the stopcock.
3. Lubricate, about 2 inches of, rectal end of enema tube with petroleum jelly [Vaseline].
4. Hang enema bucket not over 2 feet above you.
5. Laying on the right side, draw both legs close to the abdomen, relax and breathe deeply.
6. Insert tube into rectum 5-8 inches. Open stopcock and allow fluid to run in very slowly to avoid cramping. Retain solution 12-15 minutes.
7. Do not place tube back into bucket until you have thoroughly cleaned it (using biodegradable food-use detergent, then rinsing well). Rinse daily, or as often as needed, with hydrogen peroxide 3%. The bucket and tube are very good growing grounds for bacteria.”

*Gerson Primer, 3rd ed., p. 3.*

“At the same time [that the coffee enemas are given], a castor oil treatment is applied every other day, consisting of two tablespoons of castor oil . . . and five hours later a castor oil enema.”

*Max Gerson, A Cancer Therapy, pp. 193-194.*

*The next two sections deal with castor oil.*

### 2.4.4 Taking castor oil by mouth

Here is the formula for this:

“Every other day, 2 tablespoons of castor oil are given by mouth at about 5:30 a.m.”

*Gerson Primer, 3rd ed., p. 3.*

Gerson Institute recommends that a cup of black coffee (coffee without cream or sugar) with raw sugar in it, be drunk immediately afterward. It is said that this will stimulate the stomach to empty the castor oil quickly into the intestine. [*Our note:* There are those who are quite successful in taking the castor oil without following it with a drink of coffee. Notice that, in the following statement, Gerson calls drinking coffee a possible *alternate* procedure.]

“Some patients do not tolerate castor oil well after breakfast. An alternate protocol is as follows: 7 a.m. - 2 large tablespoons castor oil, 1 cup coffee with brown sugar - 7:05 a.m., coffee enema.”

*Max Gerson, A Cancer Therapy, p. 247.*

[*Our note:* Keep in mind that coffee taken by mouth produces significant physiological harm.]

“A cup of coffee taken by mouth has an entirely different effect ... It heightens the reflex response, lowers the blood pressure, increases heart rate, perspiration, causes insomnia and heart palpitation.”

*Max Gerson, A Cancer Therapy, p. 191<sup>37</sup>.*

## 2.4.5 Taking castor oil by enema

This procedure is done 5 hours after taking the castor oil:

“At about 10:30 a.m., 5 hours after your castor oil by mouth, the castor oil enema ... [is taken]. The castor oil should be poured down the enema tube first. Insert and instill the castor oil until no more remains in the bucket. Close the plastic ring. Add the 8 oz. of coffee concentrate and 16 oz. of distilled water at body temperature. As the warmed solution flows through the tube, it will wash the balance of the castor oil into the intestinal tract. You may retain this for a short time, but it is not required.”

*Gerson Primer, 3rd ed., p. 3.*

For optimum results, swish a bar of non-detergent soap in the bucket, This will help the castor oil mix with the water better.

## 2.5 Dealing with pain

In the later stages of cancer, there is much pain. There is likely to also be pain in the first few weeks on the Gerson program. Max Gerson discovered that this was caused by the high volume of poisons in the system. He found - quite consistently! - that coffee enemas and castor oil not only helped the liver, but also greatly reduced the pain.

### 2.5.1 Pain triad

However, in the first few weeks of treatment, the pain can become severe since the tumor is breaking down and so many toxic substances are circulating through the body. When needed, the Gerson specialists give three substances, which they call the “*pain triad*.”

“For cancer patients, even in advanced stages, pain relief was promptly obtained by the use of coffee enemas, given every two hours in some cases. In the first few days of the therapy, it was sometimes necessary to add ‘pain relief.’ In these cases, Dr. Gerson allowed the use of the following, used together: one tablet of aspirin (5 gr.), one vitamin C (100 mg.) and one niacin

---

<sup>37</sup>**Livro:** “A Cancer Therapy - The Cure of Advanced Cancer by Diet Therapy”, **Capítulo 25:** “Cancer Diet and its Preparation”, **Item 25.6:** “Enemas”, **Parágrafo 4.**

(50 mg.) up to four times in the course of 24 hours. [You will note below, that the Gerson Institute has changed this dosage somewhat.] These ‘three pills’ also produced restful sleep. Their action is surprisingly effective once spasms and edema are eliminated through large doses of potassium given immediately at the start of the treatment with detoxification. The relief obtained through the use of the constantly given coffee enemas is quickly noted by the patients and they often voluntarily take more than the number prescribed.”

*Charlotte Gerson, Appendix I,  
A Cancer Therapy, p. 397<sup>38</sup>.*

Several years later, the Gerson Institute published its *Gerson Primer*, in which the triad formula was slightly changed, by increasing the vitamin C dosage:

“Pain triad. The triad should be used sparingly. Do not exceed 6 dosages in a 24-hour period unless prescribed by your physician:”

“50 mg. niacin / 500 mg. ascorbic acid / 5 gr. aspirin.”

“The pain triad becomes progressively more effective as the body undergoes detoxification [elimination of poisons through enemas]. It can be used at bedtime to assist in going to sleep for those patients with substantial pain.”

*Gerson Primer, 3rd ed., p. 11.*

## 2.5.2 Castor oil pack for pain

Another Gerson aid in counteracting pain is the castor oil pack. This is used during severe flare-ups involving liver pain, spasms in the bile system, or strong pain elsewhere. This treatment can also be used by arthritic patients who have swollen, painful joints. Although messy, when used on the hands and feet, it is still very effective.

1. Soak 3 pieces of white flannel with castor oil. Squeeze out excess castor oil.
2. Place flannel over liver or other affected area.
3. Place slightly larger sheet of plastic over the flannel.
4. Use medium temperature heating pad over area. Do not let the pack get cold or uncomfortably hot.
5. Keep it on for 1 to 1½ hours. Apply it every four hours. You can reuse the castor oil pack.”

*Gerson Primer, 3rd ed., p. 11.*

---

<sup>38</sup>**Livro:** “A Cancer Therapy - The Cure of Advanced Cancer by Diet Therapy”, **Capítulo 34:** “Atualizações: Appendix I, II and III”, **Item 34.1:** “Appendix I: Restoring the healing mechanism in other chronic diseases - Charlotte Gerson”, **Parágrafo 27.**

### 2.5.3 Hydrotherapy for pain

Another Gerson treatment for pain is water therapy. This can be in the form of a hot tub bath or hot fomentations (hot, damp cloths) laid over the painful area. Hydro-therapy treatments are excellent for dulling and calming the pain. They also assist in improving blood and lymphatic circulation. But patients with nervous system disease (such as multiple sclerosis) should not receive high temperatures. Cool compresses are better for them.

(For detailed instructions on hydrotherapy treatments, see the present writer's 294-page book, *The Water Therapy Manual*; \$9.95+\$1.50.)

### 2.5.4 Heat above the abdomen for upset intestinal tract

A heating pad can be placed over the abdomen. This tends to calm the irritated, hyperactive intestinal tract.

### 2.5.5 Chamomile tea enema for upset intestinal tract

Place 4 tbsp. dried chamomile flowers in 1 quart water. Boil 5 minutes and simmer for 10 minutes. Strain. Use it when it has cooled to body temperature. Use full strength, and give just before a regularly scheduled coffee enema. Retain the tea for about 5 minutes. Upon releasing it, start the coffee enema. In severe cases, chamomile concentrate can be added to all coffee enemas.

Here is how to make chamomile concentrate:

Mix 1 cup dried chamomile flowers in 2 cups (1 pint) distilled water. Simmer 30 minutes in covered saucepan. Strain and press the flowers to extract all the liquid. Add enough distilled water to bring the total again to 1 pint. Keep in closed glass jar not longer than 3 days. To use it: Pour 4 oz. concentrate into enema bucket; then fill with distilled water.

### 2.5.6 Potassium added to enema water

Another helpful tip is to add 2 tbs. potassium compound to each enema bucket. This will help relieve spasms and help promote bile flow. But it should be discontinued after 10 to 14 days.

### 2.5.7 Flare-ups and reactions

The dissolving of the tumor causes a toxic buildup. As efforts are made to detoxify the body, reactions occur. Sudden, stronger reactions - known as flare-ups - may occur. It is encouraging to know, when these happen, that they are signals that the body is gradually throwing off the poisons. Here is a description of some of them:

Aches, pains, sore muscles and joints, nausea, and sometimes vomiting. There may be diarrhea, pain, chills, fever, foul odors, depression, and/or jaundice.

Here are a few suggestions; more are to be found in *The Gerson Primer*, pp. 14-15, and *A Cancer Therapy*, pp. 201-203. (If a person is serious about going on the Gerson program, he should either go to the Gerson Institute and/or consider purchasing those two books. At the back of the *Primer* are 35 pages of recipes.)

**Aches, pains, sore muscles and joints:** Use clay packs, castor oil packs, hydrotherapy, the pain triad, and bed rest. Usually not over 24-48 hours.

**Nausea:** Increase intake of peppermint tea and oatmeal. Possibly reduce the intake of other solid foods or exchange them for grated and mashed food. May last several days.

**Vomiting:** Greatly increase peppermint tea intake to as much as a gallon or more. Substitute oatmeal for regular meals. Generally less than 24 hours.

**Diarrhea:** Potassium gluconate ( $\frac{1}{8}$  tsp. in tea every 2-4 hours), and clay ( $\frac{1}{4}$  tsp. in tea every 3-6 hours). Usually not over 24-48 hours.

**Pain:** Increase the number of enemas. Use the other pain suggestions mentioned earlier in this section. May signal a flare-up, starting 48-72 hours beforehand; lasting up to 72 hours afterward.

**Chills and fever:** Bed rest for both. Warm baths for chills; cool water rubdown and damp cloth on forehead for fever. If the fever continues to rise, use chamomile enemas, pain triad. Do not let the fever go above 103o F. A partial fever actually helps burn out - kill - the cancer; but, of course, it does not eliminate the toxic remains. May last 24-48 hours.

**Foul odors (breath, body odor, smelly enemas):** No special precautions need be taken. Eat garlic, drink extra juice or tea, bathe, change clothes more often, and increase the number of enemas. This generally occurs after a reaction for up to 24-48 hours.

**Depression:** Provide encouragement; pray with them. A depression may signal a flare-up, for it begins up to 72 hours ahead of the flare-up, and lasts up to 72 hours afterward.

**Jaundice:** Increase juices and enemas. Generally lasts up to 48 hours after a flare-up. Greater frequency of enemas: It is important to understand that sometimes there must be a return to a strict, intensive program, as carried out during the first 3-4 weeks of the program.

## 2.5.8 Clay poultice

When there is inflammation, stomach or intestinal problems, diarrhea, or toxic overload, clay poultices are helpful.

Clay powder is similar to charcoal in its adsorptive strength; that is, its ability to pull out toxic substances and lock with them, so they can be carried away.

Here is how to apply a clay poultice to a sore or inflamed part of the body:

Place a needed amount of clay in *just enough* hot water to make a paste. To prevent cooling, quickly place it on a square of clean muslin or cotton cloth. Lay it on the problem area. Cover with plastic, and place a wool cloth over that. Pin it in place, and leave it on overnight. In the morning, remove it, rub the area with ice or a very cold, wet cloth. Repeat when needed.

## 2.6 Other points

### 2.6.1 Green leaf tea enema

This enema is used for localized cleansing.

“In cancerous diseases of the colon, we use half a quart of the usual green leaf juice, as prepared for drinking, at body temperature. Let it flow in very slowly and keep as long as possible, since it is best when it is entirely absorbed by the colon. Where there is a colostomy, we use a catheter and let it flow into the diseased part, very slowly. In diseases of the vagina or cervix, or urine bladder, we let smaller quantities flow into these parts to help rid the body of odorous necrotic [dead] tissue discharges. Little bleedings are no contraindication. This



procedure is actually requested by patients as it brings them much relief from pain, discomfort and offensive odor.”

*Max Gerson, A Cancer Therapy, pp. 194-195<sup>39</sup>, item 4 of the list.*

## 2.6.2 Massage

To what degree should cancer patients receive massages, and should they be given over the tumor site?

Question: “What do you think of deep manipulation?”

Answer: “Cancer patients should not be massaged [hard; or over the cancer site]. Rubbing of the skin to open the capillaries and to help the body to stimulate the circulation is very valuable. We give the patient a rub two or three times a day before meals with a solution of  $\frac{1}{2}$  glass water with two tablespoons rubbing alcohol and two tablespoons of wine vinegar. To rub the whole body is very refreshing and helps the circulation.”

*Max Gerson, A Cancer Therapy, p. 418<sup>40</sup>.*

## 2.6.3 The will to live and push through

Max Gerson said,

“The chief concern is the patient’s will to live and to be cured.”

*Max Gerson, A Cancer Therapy, p. 214<sup>41</sup>.*

Some do not realize how serious the disease is, and either do not want to bother going on the program or are quickly satisfied when they see a few good days and go off of it. Some reject the treatments outright. Others do not want to give up their present way of life. A few feel hopeless and pessimistic. They have experienced so many disappointments in the past, they do not wish to try again. Others have family problems. This may include relatives who oppose their being on the program.

“People go to hospitals for operations or serious illness; the family considers them recovered upon their return. It is different with cancer. Cancer is a degenerative disease, not an acute one, and the treatment can be effective only if carried out strictly in accordance with the rules for one and a half to two years.”

*Max Gerson, A Cancer Therapy, p. 215<sup>42</sup>.*

---

<sup>39</sup>**Livro:** “A Cancer Therapy - The Cure of Advanced Cancer by Diet Therapy”, **Capítulo 26:** “The Practice of the Therapy”, **Item 26.1:** “Enemas”.

<sup>40</sup>**Livro:** “A Cancer Therapy - The Cure of Advanced Cancer by Diet Therapy”, **Capítulo 34:** “Atualizations: Appendix I, II and III”, **Item 34.2:** “Appendix II: The cure of advanced cancer by diet therapy - Max Gerson”, **Parágrafo 95.**

<sup>41</sup>**Livro:** “A Cancer Therapy - The Cure of Advanced Cancer by Diet Therapy”, **Capítulo 29:** “Rehabilitation of the Cancer Patient”, **Parágrafo 5.**

<sup>42</sup>**Livro:** “A Cancer Therapy - The Cure of Advanced Cancer by Diet Therapy”, **Capítulo 30:** “Most Frequent Mistakes of Patients in the Application of the Treatment”, **Parágrafo 2.**

“It is not easy to keep strictly to the treatment if a convalescent patient does not have enough help. In all cases a life is at stake. After a remarkable improvement and a renewal of faith and hope, some patients discontinue the treatment because of mistaken advice and family aversion.”

Max Gerson, *A Cancer Therapy*, p. 217<sup>43</sup>.

We all need faith, love, and encouragement. If you cannot get it from anyone else, I assure you that you can get it from God! Cry to Him as a little child. Tell Him all your troubles. He can strengthen you to push on through to a successful conclusion.

And, regardless of how everything ultimately turns out, being with Him and resting in His love is the most important part of all.

## 2.7 Instructions for giving injections

If you go to the Gerson Institute, you will receive injections of  $B_{12}$  and crude liver. While there, they will teach you how to give them to yourself. Upon arriving home, you will probably be administering your own injections. You have a legal right to treat yourself. If you need guidance, find a health professional in your area to help get you started. *Here is additional information:*

These are the items you should have on hand.

- Alcohol
- Cotton
- Syringe
- Extra needle

(Each needle is 25 gauge, and  $\frac{5}{8}$  inch or 1 inch length)

Crude liver injection

Vitamin  $B_{12}$

Keep the alcohol, cotton, syringe, and extra needles together on a tray in a clean place, where children cannot reach it. Either keep it on a high shelf with a clean cloth over it, or in a clean drawer which rodents cannot penetrate.

Keep the open liver and  $B_{12}$  ampules (bottles) in new baggies in refrigerator. Also store unopened liver bottles in refrigerator.

**1. Remove covers:** Remove protective metal covers from rubber stopper on either, or both, the crude liver bottle and the vitamin  $B_{12}$  bottle.

**2. Wipe bottle tops:** Wipe the top of both bottles clean with alcohol.

**3. Keep needle and syringe sterile:** Make sure the needle and syringe are kept sterile. This is very important.

**4. 3cc air into liver ampule:** Draw 3cc of air into the empty syringe. Turn the *crude liver bottle* upside down and push needle up through center of stopper. Push 3cc of air into crude liver

---

<sup>43</sup>**Livro:** “A Cancer Therapy - The Cure of Advanced Cancer by Diet Therapy”, **Capítulo 30:** “Most Frequent Mistakes of Patients in the Application of the Treatment”, **Parágrafo 11.**

bottle. This will pressurize the ampule and permit easy withdrawal of fluid. Remove needle from crude liver bottle.

**5.  $\frac{1}{10}$ cc fluid from  $B_{12}$  ampule:** Turn  $B_{12}$  bottle upside down and push syringe needle through stopper. Pull out  $\frac{1}{10}$ cc (just a few drops, to the first small line on the barrel of the syringe). Withdraw needle from  $B_{12}$ .

**6. 3cc from liver ampule:** Reinsert syringe needle into inverted *crude liver bottle* and pull out 3cc of liver extract (pull plunger to first line below 3cc marking to allow for  $B_{12}$ ).

**7. Change needles:** Remove and discard needle. It is no longer sharp enough for use in injecting yourself. Screw a new needle into syringe.

**8. Prepare syringe for injection:** Gently tap the side of the syringe to gather bubbles to the top of the syringe. When bubbles are gathered, press plunger until a tiny bit of fluid spurts from the needle. Syringe is now ready to be used. (Put needle cover on loosely.)

**9. Clean injection area:** Clean the general injection area well with alcohol and cotton.

**10. Locate the specific injection area: How to locate the injection area:** Find your waist, put your finger on your waist at the side seam, go down three finger widths, and straight back 3 finger widths, experiment by pressing in with a fingernail to find an area about the size of a nickel which has few nerve endings, and doesn't hurt - that's where the needle goes. (Each time you give an injection, alternate sides.)

**11. Spread skin, inject slowly:** Spread skin and push needle in. Push plunger down slowly.

**12. Pull, alcohol, cotton:** Pull needle out and rub area with alcohol for 30 seconds. If bleeding occurs, press cotton to wound. It will stop bleeding very shortly.

**13. Dispose of needles:** Break needle and disassemble syringe. Keep broken needles in a small card-board box. Tape box shut when full and discard.

**14. Store alcohol, cotton, syringe, and needles:** As mentioned earlier, keep these (along with unopened  $B_{12}$  ampules) in a clean, safe place.

**15. Clean and store ampules:** Clean open liver and  $B_{12}$  bottles with alcohol and store in refrigerator. Protect with fresh baggie after each use. Store unopened liver extract bottles in refrigerator.

## 2.8 Why do some cancer patients do better after surgery?

The removal of the tumor takes away a lot of poisons, and the patient may feel better for a time. But his habits have not changed, his body has not been cleansed, and he has been weakened by a deep wound. Here is Dr. Gerson's comment:

[Following surgery] "Some patients have only temporary damage of the liver and the liver is then able to restore itself. But that is not in a majority of the cases. Sometimes if you remove, say a breast cancer, the removal of these toxins and poisons which the cancer itself generates is sufficient in some cases to relieve the temporary damage from the liver. Then the liver can recover. But these are exceptions. And it is not basic. Also some of these patients get recurrences later. Many of my patients, after an initial operation, had stayed well for three or sometimes even five years. Then the cancer recurred. They were inoperable and orthodox medicine was helpless." [Then they came to me for help.]

Max Gerson, *A Cancer Therapy*, p. 417<sup>44</sup>.

---

<sup>44</sup>**Livro:** "A Cancer Therapy - The Cure of Advanced Cancer by Diet Therapy", **Capítulo 34:** "Atualizações:

Charlotte Gerson acknowledges that individuals who have undergone chemotherapy or radiation are so poisoned and weakened thereby that the Gerson therapy is less likely to succeed.

## 2.9 How to prevent cancer

Here is how Dr. Gerson answers this question:

Question: “How can we prevent cancer?”

Answer: “Cancer must be prevented by preventing damage to the liver. The basic measure of prevention is not to eat the damaged, dead, poisoned food which we bring into our bodies. Every day, day by day, we poison our bodies. The older people still have a better liver and resistance from the [better] food they had when they were young. The younger people get worse and the babies, now the second generation on canned baby foods, are still worse. They get leukemias. First of all, eat as much as you can of raw food, keep the potassium level up, and take some iodine.”

*Max Gerson, A Cancer Therapy, pp. 418-419<sup>45</sup>.*

---

Appendix I, II and III”, **Item 34.2:** “Appendix II: The cure of advanced cancer by diet therapy - Max Gerson”, **Parágrafo 76.**

<sup>45</sup>**Livro:** “A Cancer Therapy - The Cure of Advanced Cancer by Diet Therapy”, **Capítulo 34:** “Atualizações: Appendix I, II and III”, **Item 34.2:** “Appendix II: The cure of advanced cancer by diet therapy - Max Gerson”, **Parágrafo 101.**

# Chapter 3

## Schedules and Supplies

Putting it all together

### 3.1 Schedules

*We have seen all the different parts; now it is time to see how it all comes together.*

#### 3.1.1 Initial house preparation

For those who plan to go to the Gerson Institute for their initial therapy, it is best to have someone do the following before completing your stay and returning home:

1. Locate sources for organic produce, including organic coffee, and purchase some.
2. Set up the juicer.
3. Reorganize the kitchen (see *Kitchen Supplies* section, below).
4. Remove all aluminum pots and pans. Get all aerosol sprays, air fresheners, perfumed items, insecticides, paint fumes, and similar materials out of the house.
5. With the exception of the juicer and cutting boards, clear the kitchen counters. There will need to be room to work.
6. Make sure the knives are sharp, for much cutting will have to be done.
7. Locate a source for distilled water and purchase some. Better yet, purchase a home distiller. (See later section, *Improving Your Water Supply*.)
8. The bedroom and bathroom may need to be arranged, to accommodate the enema taking. If movement is impaired, a bench may be necessary.

#### 3.1.2 Sample enema schedule

Here is a sample daily enema schedule:

Normal Days		Castor Oil Days
<b>Morning</b>		
5:00		Wake-up
5:30	Wake-up	Castor oil by mouth
6:00	Coffee enema	Coffee enema
8:00	Breakfast	Breakfast
10:00	Coffee enema	
10:30		Castor oil enema
<b>Afternoon</b>		
1:00	Lunch	Lunch
2:00	Coffee enema	Coffee enema
3:00		
6:00	Coffee enema	Coffee enema
7:00	Dinner	Dinner
10:00	Coffee enema	Coffee enema

### 3.1.3 Daily schedule

On the previous page you will find two daily schedules. The top one is a sample for a typical patient. However, you might not be the average. Below it is a blank schedule, which you can make photocopies of for personal use.

Here is a more detailed schedule for carrying out the Gerson therapy at home:

#### A.M.

**7:00** - Awake.

**7:15** - Eat a little fruit. Take coffee enema.

**7:45**

1. Start oatmeal and coffee concentrate.
2. Make citrus juice (with Lugol's and potassium).
3. Sort medications for the day.

**8:00** - Eat breakfast.

**8:30**

1. Wash vegetables and fruits to be used for the day's juices and meals.
2. Strain the coffee.
3. Start the Hippocrates' soup.

**9:00**

Drink green juice (with potassium).

Put veggies in oven, at 150° F., for lunch.

Be sure to use a tightly covered casserole.

**9:30** - Drink carrot-apple juice (with Lugol's and potassium).

**10:00** - Drink carrot-apple juice (with Lugol's and potassium).

**11:00** - Carrot juice (with 2 liver tablets) 11:15 Coffee enema

#### P.M.

**12:00** 1. Green juice (with potassium)  
 2. Prepare lunch.  
     salad  
     vegetables (check oven)  
     Hippocrate's soup  
**1:00** - Eat lunch. Carrot-apple juice (with Lugol's and potassium)  
**2:00** - Green juice (with potassium)  
**3:00** - Carrot juice (with 2 liver tablets)  
**3:15** - Coffee enema  
**4:00** - Carrot juice (with 2 liver tablets)  
**5:00**      Green juice (with potassium)  
             Prepare dinner: salad  
             Prepare carrot-apple juice, etc.  
**6:00** - Carrot-apple juice (with Lugol's and potassium)  
**7:00** - Coffee enema  
**8:00**      Carrot-apple juice (with Lugol's and potassium)  
             Put together a fruit plate to nibble on through the night  
**10:00** - Eat some fruit. Coffee enema

### A.M.

**3:00**      If it seems best to do so: Eat some fruit.  
             Coffee enema

The above schedule is keyed to a regular day on full therapy, which includes 13 8-oz. cups of juice and 5 coffee enemas.

However, remember the woman Dr. Gerson mentioned, who was so far gone that he feared to begin treatment, but she pulled through because she kept taking the coffee enemas every hour or two (instead of only 5 a day), and castor oil enemas twice a day (instead of once every two days). She kept her liver and bowels so cleaned out that very advanced cancer was not able to take her life (*A Cancer Therapy*, p. 416). Hers was an extreme case, yet she conquered because she was extremely concerned to live.

Whoever is doing the kitchen work should allow about 10-15 minutes to prepare a juice and to clean up the juicer. Therefore, begin making juices about 15 minutes before the hour.

In the above list, medications are listed in parentheses after juices. Those medications may be added, if it is thought best to do so. Never exceed total medication totals prescribed by your Gerson physician.

## 3.2 Supplies

### 3.2.1 Kitchen supplies

In their continuing work to help people recover from cancer, the Gerson Institute kindly provides a checklist of kitchen items which will be found useful in caring for a person on the Gerson program. (As with everything else, the most complete collection of such data will be found in books available from the Gerson Institute, especially their *Gerson Primer*.)

Most of the following items may be purchased locally at a general department store, health-food store or hardware store.

#### Appliances

Juicer (press type)

water distiller

Liquid warmer: low temperature burner plate

a second refrigerator (optional)

Yogurt maker (optional)

Orange juicer reamer type

Blender (with some recipes, this can be used instead of the rotary food mill)

#### Cookware

Stainless steel pots and pans with tight fitting lids

1 qt. saucepan

2 qt. saucepan 3 qt. saucepan

4 qt. saucepan

8 qt. saucepan

Pyrex or Corningware baking dishes (with covers)

*Note:* Teflon and other inert nonstick surfaces are allowed. But do not use damaged pans. (Teflon is rather easily torn away, revealing the poisonous aluminum underneath.)

Of course, wherever it might come in contact with food, absolutely no aluminum is to be used. But aluminum - clad stainless steel pots are acceptable.

#### Kitchen Utensils

Vegetable brushes: for scrubbing and cleaning vegetables

Plastic cutting boards (assortment of sizes)



Rotary food mill: for milling special soup (can use blender)

Sixty-minute timer: for juices

Wire bristled brushes: for cleaning juicer parts

Glass measuring cups: 1 Cup and 4 Cup

Oven thermometer: for checking oven temperature

Funnels: for filling jars and bottles

Strainers: for coffee, tea

Colander: (a perforated bowl) for straining coarse vegetables

Mixing bowls: a set of convenient sizes

Grater: to grate food fine to coarse

Knives: various sizes including 2-3 paring knives

Measuring spoons: for measuring small amounts

Metal spatula

Potato masher: made of solid wood or heavy wire for mashing foods

Soup ladle: for serving soups

Apple corer: to remove apple cores

Garlic press: for crushing garlic

Thermoses: for soup, juices, tea

Kitchen scale: 10 or 25 lbs.

Glass storage jars: dry coffee, potassium solution, etc.

Jar for coffee concentrate (with 1 cup calibration marks)

Pill container: with 6 sections

### **Condiments and Staples**

	Herbs and spices	
allspice	tarragon	rosemary
fennel	bay leaves	sorrel
saffron	marjoram	dill
anise	thyme	sage
mace	coriander	summer savory

Drip ground organic coffee

Honey

Oatmeal (old-fashioned)

Pure maple syrup

Crude, raw brown sugar (organic dried cane sugar)  
Dried fruits (soak first)  
Flaxseed oil (in black bottles)  
Red wine vinegar [lemon juice is better]  
Unsulphured blackstrap molasses  
Peppermint  
Chamomile  
Lemons

### **Paper Goods**

Paper Towels  
Muslin or cheesecloth  
Toilet paper  
Juicing cloths  
Waxed paper

### **Bathroom Supplies**

Enema Bucket  
Castile soap  
Castor oil  
Ox-bile powder  
Paper towels  
Wooden spoon  
Enamel pitcher  
Toilet paper  
Toothpaste (a natural brand, such as: Chloresium, Tom's, Shaklee, Waleda)  
Shampoo (natural shampoo, no coloring or proteins added, such as: Nature's Gate, Tom's, Shaklee, Dr. Bronner's)

### **Grocery List for a Week**

Carrots, 50 lbs.  
Tomatoes, 20 lbs.  
Potatoes, 25-50 lbs.  
Onions, 20/week (purchase 25 lb. sack)  
Leeks, 2 bunches  
Beets, 5 branch tops for juice and bottoms for eating  
Green Peppers, 8 weekly

Celery, 2-3 bunches  
 Celery Root, 2 roots (if available)  
 Romaine, 20, good size  
 Chard, 4 bunches  
 Endive, 3 heads  
 Lettuce, 15 heads (red leaf, green leaf, oakleaf, butter leaf, etc.)  
 Watercress, 2 bunches  
 Escarole, 2 heads  
 Parsley, 1 bunch  
 Parsley Root, 1 bunch (if available)  
 Apples, 40 lbs. (pippins or granny smith apples)  
 Oranges, 10-15 lbs.  
 Garlic, 1 bulb  
 Coffee, 3-5 lbs.  
 Distilled water, 15 gallons

*Note:* Regarding the possibility of improving your household water supply, see the section, “*Improving Your Water Supply*,” below.

### 3.2.2 Three-month’s supply

The Gerson Institute asks its patients to order a three-month supply of therapy-related materials, prior to leaving the Institute.

Here is this list. You may find it helpful. (Immediately following it, will be found a mail-order blank for many of these items.) First is listed the item, then the quantity needed for a three-months’ supply, and then a brief description.

Syringes - 90 / 3cc with 22 or 23 gauge needle x 1 inch  
 Needles - 90 / 25 gauge x 1 inch  
 Crude Liver - 27 / 10 cc bottles or injection  
 Vit.  $B_{12}$  - 1 / 30 cc bottle for injection  
 Thyroid - 1 /  $\frac{1}{2}$  grain (32.4 mg.), 1,000 count tabs  
 Lugol’s - 1 / bottle of  $\frac{1}{2}$  strength of Lugol’s solution  
 Penicillin - 1 / bottle of 100 tablets  
 Potassium compound - 12 / bottles, 100 grams each  
 Potassium Gluconate - 1 / bottle  
 Acidol - 5 / bottles of 100 caps each  
 Niacin - 1 / bottle of 1,000 tabs, 50 mg. each  
 Pancreatin - 1 / bottle of 1,000 tabs, 325 mg. each  
 Liver Caps - 1 / bottle of 1,000 caps, 500 mg. each  
 Ox Bile - 1 / bottle

Ion Min - 1 / bottle Ion Min Clay powder

Enema Buckets - 2 / extra enema buckets

Castor Oil - 1 / pint

Castile Soap - 1 / bar of soap

Flaxseed Oil - 8 / bottles

Foley Food Mill - 1 / two quart size

Not required, but recommended:

Vida bread (an organic product)

Pancreatin - extra strength, 1,200 mg.

Wobe enzymes

Nelaton enema catheter

Hydrogen peroxide, 30%

Organic coffee - 1 kilo bag

Charcoal tablets

Water distiller

Home ozone generator

Electric hot plate

Radiant heat plate

**MAIL-ORDER FORM** - *On the next page, you will find a Supply Order Sheet.* Make xerox copies of it, and use them to order supplies. These order sheets are made available by the Gerson Institute, and *Stat, S.A.* is the firm to which they refer their customers.

### 3.2.3 Gerson supply sources

Here is a brief summary of Gerson supply sources. Former Gerson hospital patients may obtain some of these items at lower prices, if they so notify the vender.

**Gerson Institute, Gerson Books and Videos, etc.:** Gerson Institute 888-4-GERSON (888-443-7766) / 619-267-1150 / P.O. Box 430, Bonita, CA 91908. Ask for information on attending the Institute, and a list of their books and videos.

**Gerson Rx prescriptions and supplies:** STAT, S.A., Apartado Postal 2392, Tijuana BCN, Mexico Ph: 011-526-680-1103

**Gerson supplies:** Baja Hosp. Services, P.O. Box 3535, Chula Vista, CA 91911 Ph: 619-425-1557. Here are examples of what is meant by "supplies": Lugol's [iodine] solution, potassium compound, potassium gluconate, acidol [HCl], niacin, flaxseed oil, castile soap, enema buckets, food mill, etc. Some of these supplies (such as Lugol's) would be difficult to obtain elsewhere.

**Organic foods:** Gerson emphasizes eating, if at all possible, organically grown fruits and vegetables. In order to learn whether this is feasible in your area, and if you can afford them, you may wish to contact OFPANA, Box 1078, Greenfield, MA, 10301; Ph: (413) 774-7511. Or you can order a U.S. directory of sources: The book is called *Organic Wholesaler's Directory and Yearbook*, community Alliance with Family Farmers, Box 464, Davis, CA 95617; Ph: 916-756-8518. c. \$35, plus \$5 shipping. California residents, add \$2.53 tax.

**Flaxseed oil:** If you cannot obtain it at your health-food store, here are addresses for ordering it direct (it might even be fresher ordered direct): Omega Nutrition, 5373 Guide Meridian, Bldg. B, Bellingham, WA 98226 Ph: 800-661-3529. Keeps unopened in freezer up to 6 months, and in refrigerator 3 months. After opening, keep it no longer than three weeks. / One of the best flaxseed manufacturers is Barlean's high lignan Flax Oil, 4936 Lake Terrell Rd., Ferndale, WA 98248

**Juicer (triturator and press):** Gerson says centrifugal juices are all right for most diseases; but, for cancer and bone-deformity conditions, a pulp grinder and press are needed.

If you have the money (\$2,000), the Norwalk Juicer and electric hydraulic press is the best: Norwalk Juicer, c/o Richard Boger, (800) 405-8423, in U.S., or (619) 755-8423 outside U.S. However, you can purchase a rebuilt one under warranty from Norwalk for about \$1,500. Norwalk Mfg Co., P.O. Box 829, Lowell, Arkansas 72745 / 800-643-8645.

If you want a used, later model Norwalk Juicer, call Richard Boger at 519-755-8423. Also phone 619-585-7600 and ask for their used Norwalk Juicer list. At the present time, they run about \$1,500; saving you over \$500. Rebuilt juicers can also be purchased for about \$1,500 from the Norwalk factory. Unlike used Norwalk juicers from other sources, these carry a warranty. Norwalk Mfg Co., P.O. Box 829, Lowell, Arkansas 72745 / 800-643-8645. When purchasing a used model, make sure you obtain the latest model.

Lower-cost non-Norwalk juicers have a separate grinder and manual press (which requires much work!): K&K Grinder and Press, c/o Al Hasser, 14410 Big Canyon Rd, Middletown, CA 95461 Ph: (707) 928-5970. Shredder, \$750, and press, \$275. You can substitute the Champion juicer as a lower-cost shredder: Lodi Health Foods, 521 S. Central Ave., Lodi, CA 95240 Ph: (209) 334-3868. \$189 plus shipping.

**Ozone generators:** To purify the air, give off ozone and negative ions. Mountain Fresh Services, P.O. Box 1915, Bonita, CA 91908 Ph: (619) 656-9077 Fax: (619) 656-6627. These are useful, but the dial should be set so that you do not detect the odor of ozone. It is said to be harmful to your brain, if you can smell it.

### 3.2.4 Locating organic food

There is an inherent problem in consuming larger quantities of fresh fruits and vegetables: the amount of residual pesticides, herbicides, fungicides, or chemical fertilizers which may have been absorbed by the plant.

“Here is a record of the average quantity of intake of some [Gerson] patients in the course of one year; a very great part of which is converted into juices:”

“1800 pounds of carrots, 1300 pounds of apples, 145 heads of red cabbage, 400 heads of lettuce, 125 pounds of green peppers, etc.”

*Max Gerson, A Cancer Therapy, p. 143<sup>1</sup>.*

Fortunately, there are organizations which specialize in telling you where you can obtain organically grown produce:

1. Check the local yellow pages for “Health- Food” stores and co-ops. Call and inquire whether they supply organically grown produce. If not, they may know where you can go.

---

<sup>1</sup>**Livro:** “A Cancer Therapy - The Cure of Advanced Cancer by Diet Therapy”, **Capítulo 19:** “Introduction to the Diet”, **Parágrafo 14.**

2. Contact OFPANA (Organic Food Produce Association of North America), Box 1078, Greenfield, MA 10301 / 413-774-7511. (1) Ask for names, addresses, and phone numbers of organic organizations in your area (OCIA, CCOF, TILTH, etc.) (2) Ask about distributors, growers, and possible retailers.
3. Order a copy of the *Organic Wholesaler's Directory and Yearbook, from Community Alliance with Family Farmers*, Box 464, Davis, CA 95617 / 916-756-8518. The book is about \$35, plus \$5 p&h. California residents add \$2.53 tax. It has the most exhaustive list available of organic wholesalers, arranged by state. Contacting those wholesalers, they can tell you who their retailers are.
4. It is possible to order organic foods through the mail. If you are able to do this, you would want to obtain *Americans for Safe Food*, from Center for Science in the Public Interest, 1875 Connecticut Ave., NW, Suite 300, Washington, D.C. 20036 / 202-332-9110. Send them a self-addressed, stamped envelope and ask for their *organic mail order list*. On it you will find organic food suppliers willing to mail you organic produce.
5. Organic coffee is also important, since regular coffee can contain pesticides, herbicides, etc. Listed below are three sources of pure organic coffee. (If you have been a Gerson patient, that is, having been to their hospital, you should identify yourself as a "Gerson patient" when ordering organic coffee, for a price break.)

Cafe Marino, Baja Hospital Service, Box 3535, Chula Vista, CA 91911 / 619-425-1557

Cafe Altura, Terra Nova, Box 5145, Ojai, CA 93023 / 415-883-8378

Harbor House Coffee, P.O. Box 1879, Clearlake Oaks, CA 95423 / 707-998-4654 or 800-541-4699

It is wise to demand proof of organic certification. If the produce is not clearly marked with a printed label, it is probably not organic. Demand proof! *On the bottom of this page are the identifying logos of five organic certification organizations.*

### 3.2.5 Lab tests

We have repeatedly mentioned that it would be wise to order the *Gerson Primer*. A number of medical laboratory tests are discussed on pp. 48-66 of that book.

### 3.2.6 Improving your water supply

Depending on regional water supplies, various forms of water purification may be purchased or leased at considerable savings over purchased bottled water. Various combinations of distillation, carbon filtration, and reverse osmosis should be considered.

Lead, radon, nitrate, fluorides, and chlorine are all significant water contaminants.

**Labs which can test your water:** The following three laboratories are approved by Consumer Union (which publishes *Consumer Reports*), and can test your drinking water by mail. However, the tests are expensive and can cost up to \$200.

National Testing Laboratories, 6151 Wilson Mills Rd., Cleveland, OH 44143 / 800-458-3330

Water Testing Laboratories, 4600 Kutztown Rd., Temple, PA 19560 / 800-433-6595

Water Test, 33 S. Commercial St., Manchester, NH 03101 / 800-426-8378

**Water cleansing devices:** Here is some data on these home water purification methods. According to Consumer Reports, of the three methods, no one approach to the problem will remove all the contaminants from your water:

There are (1) distillers, (2) reverse osmosis units, and (3) carbon filtration units.

Distillers and reverse osmosis units are better at removing organic hazards (plant and animal contaminants) than do reverse osmosis units. But distillers miss the volatile ones, such as benzene, carbon tetrachloride and trichloroethylene. *The best way to solve this problem is to couple either a distiller or a reverse osmosis unit, with a carbon filtration unit.* In this way, *the water is first run through a distiller or reverse osmosis unit, and then through a carbon filtration unit.*

Carbon filtration is the only way to remove chlorine, benzene, carbon tetrachloride, trichloroethylene, and radon from your water. But they cannot removed inorganic health hazards.

Either distillers or reverse osmosis units will remove arsenic, barium, cadmium, chromium, fluoride, lead, nitrate, and selenium.

Here are other facts to keep in mind:

Distillers generally draw 1,500 watts, and cost about \$1.50 in electricity per five gallons. For Gerson patients, the cost can be about \$30 per month.

Reverse osmosis units waste about 80% of the water! It runs down the drain. If you have a well, that could be a serious problem. When it is time to replace the membrane (usually once a year), the cost runs between \$40 to \$240.

Carbon filters must be frequently replaced. Know in advance how much the replacement filters will cost. Some companies charge \$5 for each replacement filter, while others demand up to \$100.

It is also possible to purchase bottled water, or rent equipment. In keeping down yearly costs, sometimes renting is the best route to go. Check your Yellow Pages.

### **3.2.7 Gerson therapy recipes**

You may wish to obtain a copy of the *Gerson Primer*, and make use of the 35 pages of recipes near the back of the book.

**IN CONCLUSION** - It would be best if, accompanied by a helper, you could go to the Gerson Institute for several weeks, before continuing on with the program at home.





# Chapter 4

## Non-Cancer Disorders

### Milder measures for non-malignancy

In order to round out this presentation, it would be well to briefly mention how the Gerson therapy is modified in working with non-malignant conditions. Cancer is so devastating to the body, that it requires special care. But a number of other conditions can be alleviated with a somewhat milder Gerson therapy.

**However, it should be kept in mind that, for all physical problems the Gerson therapy deals with, the strictest program will always accomplish the best results, and more quickly.**

“With the ‘strictest cancer diet,’ other chronic diseases respond more rapidly than with the less intensive treatment.”

*Charlotte Gerson, Appendix I,  
A Cancer Therapy, p. 398.*

**WHAT OTHER CONDITIONS CAN THE GERSON THERAPY HELP?** - It is remarkable how many conditions can be helped by the Gerson method. Consider this:

“Initial evidence of the healing process brought about by the Gerson therapy takes various forms. For instance, edemas go down with astonishing rapidity; skin afflictions recede and heal quickly; in areas of old scars, adhesions, lumps, or bone deformations, ‘healing’ often begins as a hyperemia, *i.e.*, the body produces dilated blood vessels with redness and tenderness in the affected area. The newly oxygenated blood, now freshly supplied with enzymes and other healing substances, is brought into the damaged or sick areas.”

*Charlotte Gerson, Appendix I,  
A Cancer Therapy, pp. 394-395<sup>1</sup>.*

By 1932, Max Gerson was able to list over 30 different diseases that his less-intensive therapy was alleviating! (In the following quotation, italics are ours.)

“My results with the Gerson Therapy [that] have been very satisfactory is arthritis deformans. X-ray examination shows that the structure of the diseased bones changes with the use of the

---

<sup>1</sup>**Livro:** “A Cancer Therapy - The Cure of Advanced Cancer by Diet Therapy”, **Capítulo 34:** “Atualizações: Appendix I, II and III”, **Item 34.1:** “Appendix I: Restoring the healing mechanism in other chronic diseases - Charlotte Gerson”, **Parágrafo 13.**

Gerson diet. The compacta becomes denser and more sharply outlined. Subjectively, the patients' symptoms improve, their motility and ability to work returns. In these cases, it is particularly important to restrict protein intake.”

“ Epilepsy reacts very favorably. Previously in 1900 the two French scientists, Toulouse and Richet, used the saltless diet in cases of epilepsy with good results. With the addition of phosphorus-enriched cod-liver oil and strictly limited protein intake, healing was speeded visibly. Mental disease was helped. Neurasthenia was greatly improved. Even in cases of neurasthenia with male impotence, potency returned. On the other hand, patients with unusually strong libido returned to a more normal condition.”

“In the tremendously extensive area of skin diseases, the saltless therapy is extremely valuable - i.e., in acne, eczema, urticaria, prurigo, pemphigus, etc., as already stressed by Luithlen. However, the use of the Gerson therapy in lupus vulgaris and psoriasis is a first and is extremely effective, even in severe cases with already partial sclerodermy. It is particularly interesting to note the scar-dissolving effect of the treatment in old scars and adhesions as well as in cases of Keloid acne.”

“ Multiple sclerosis responds well. The ulcerations or scar tissue are absorbed and healed. However, where there is destruction of nerve tissue, obviously this cannot be restored. ‘Many other chronic diseases respond extremely well to the Gerson therapy even though in many cases their origin is obscure or unknown. Exophthalmic goiter (Grave’s disease) responds well. However patients must be given proteins after about four weeks or weakness and loss of weight may result.”

“ Dysmenorrhea, vaginal discharge, atypical menstrual periods (of 21 days or 5 to 6 weeks) return gradually to normal cycles of 28 days.”

“The use of the therapy in kidney disorders should be obvious. It is also important to note that diseases of the respiratory organs, such as asthma, respond very well. Bronchiectasis, also chronic cases, react well without exception.”

“One important field of application of the therapy is in heart and circulatory diseases where the results are excellent, also in arteriosclerosis and connected kidney diseases. In these cases, it is important to limit protein intake.”

“It is interesting to note here that in almost all cases of serious migraine the presence of paradentosis was noted. This always disappeared together with the migraine. I found later that the presence of paradentosis was often true in cases of severe arthritis deformans too ...”

*Max Gerson, A Cancer Therapy, pp. 395-397<sup>2</sup>.*

**CONDITIONS WHICH MUST BE TREATED USING THE INTENSIVE CANCER THERAPY** - It is important to keep in mind that some diseases require the intensive Gerson therapy used for cancer!

“An intensive Gerson Therapy is indicated in cases of serious degeneration or intoxication (including previous long term [medicinal or street] drug usage) ... (1) Intoxication during pregnancy, (2) tuberculosis, (3) osteoarthritis, (4) mental disease and bodily asthenias, (5) spastic conditions, especially angina pectoris, (6) asthma, (7) malignancies, (8) spinal cord degenerative changes.”

*Charlotte Gerson, Appendix I,  
A Cancer Therapy, p. 401<sup>3</sup>.*

---

<sup>2</sup>**Livro:** “A Cancer Therapy - The Cure of Advanced Cancer by Diet Therapy”, **Capítulo 34:** “Atualizações: Appendix I, II and III”, **Item 34.1:** “Appendix I: Restoring the healing mechanism in other chronic diseases - Charlotte Gerson”, **Parágrafo 16.**

<sup>3</sup>**Livro:** “A Cancer Therapy - The Cure of Advanced Cancer by Diet Therapy”, **Capítulo 34:** “Atualizações: Appendix I, II and III”, **Item 34.1:** “Appendix I: Restoring the healing mechanism in other chronic diseases - Charlotte Gerson”, **Parágrafo 41.**

**TREATMENT FOR NON-MALIGNANT CONDITIONS** - Here, very briefly, is an overview of how to treat non-cancerous diseases.

**Medicinal drugs:** Other drugs, currently being taken, will have to be discontinued.

“With the start of the Gerson therapy, all of the usual drugs have to be discontinued. This includes not only the highly toxic pain killers often administered to terminal cancer patients but also chemotherapeutic agents, cytotoxins, blood thinners vasodilators, cortisone, antihistamines and others too numerous to mention. These drugs are materials foreign to the body. They place an additional burden on the liver which must eliminate foreign materials. Also these drugs contribute nothing positive toward rebuilding the diseased organs. The purpose of the therapy is to reduce and eliminate the load of toxic materials which have accumulated. Obviously one must not add to this load.”

*Max Gerson, A Cancer Therapy, pp. 396-397<sup>4</sup>.*

**Relieving pain:** The Gerson enemas - given as often as every 2 hours, - do an outstanding job of pain reduction. However, the “pain triad,” mentioned earlier [one tablet of aspirin (5 gr.), one Vitamin C (100 mg.) and one Niacin (50 mg.) up to four times in the course of the first 24 hours], is used to help initially reduce pain. But soon the cleansing effect of the enemas takes effect and the pain is reduced.

Spasms and edema are eliminated through large doses of potassium given right away at the start of the detoxification.

**Diabetes:** Insulin intake should be continued. Careful monitoring of blood and urine will reveal when the pancreas begins functioning normally again. The insulin dosage can often be cut in half with the first 10 days of therapy, and generally eliminated entirely within a month.

“Dietary adjustments made for diabetic patients were to reduce the number of baked potatoes given from two to one a day, to use grapefruit juice for breakfast instead of orange juice, and to give more green juice than apple and carrot juice.”

*Charlotte Gerson, Appendix I,  
A Cancer Therapy, p. 397<sup>5</sup>.*

**Circulatory conditions:** It is important that a total of 3 tbsp. of flaxseed oil be included in the diet. (This is the amount in the regular cancer therapy.) In combination with the rest of the therapy, this will eliminate the danger of clotting - even though regular medications (blood thinners and capillary dilators) have been discontinued. Gerson used flaxseed oil to reduce the high cholesterol level in cancer and arteriosclerosis patients. In cancer patients it also speeded up the reduction and absorption of the tumors.

**Multiple sclerosis:** Egg yolks are used early in the treatment; whereas, in cancer therapy, they should not be given for over a year.

**Arthritis:** Protein must be kept to a minimum for a lengthy period of time.

**Goiter:** Protein must be added after only 3-4 weeks.

---

<sup>4</sup>**Livro:** “A Cancer Therapy - The Cure of Advanced Cancer by Diet Therapy”, **Capítulo 34:** “Atualizações: Appendix I, II and III”, **Item 34.1:** “Appendix I: Restoring the healing mechanism in other chronic diseases - Charlotte Gerson”, **Parágrafo 26.**

<sup>5</sup>**Livro:** “A Cancer Therapy - The Cure of Advanced Cancer by Diet Therapy”, **Capítulo 34:** “Atualizações: Appendix I, II and III”, **Item 34.1:** “Appendix I: Restoring the healing mechanism in other chronic diseases - Charlotte Gerson”, **Parágrafo 29.**

**Muscular dystrophy:** It is important that sufficient amounts of iodine and thyroid be given, to reestablish the iodine metabolism by the thyroid.

**THE STRICT THERAPY IS ALWAYS BETTER** - Charlotte Gerson advises that it is best to go on the strict, cancer-reduction program, not a milder version. We will quote her statement once more:

“With the ‘strictest cancer diet’, other chronic diseases respond more rapidly than with the less intensive treatment.”

*Charlotte Gerson, Appendix I,  
A Cancer Therapy, p. 398.*

**THE Milder THERAPY** - Here are several aspects of this milder program:

Permitted and forbidden foods remain the same, except that fresh berries can be used. The number of juices and enemas can be reduced, and the patient can return to work sooner.

1. **Foods:** Forbidden foods and stimulants cannot be introduced into the diet with the exception of some fresh berries and safflower oil. [*Our note:* It is better if only flax oil is used.]
2. **Enemas:** Detoxification must be carried on regularly, although 2 to 3 coffee enemas a day are sufficient.
3. **Juices:** The amount of fresh juices can be reduced to 4 or 5 glasses a day plus one glass of citrus juice (always freshly prepared just before drinking). Also, carrot and apple juice may be mixed in the course of preparation with the green leaf juice, and a centrifugal juicer type may be used. In order to speed up healing, more juices and presstype juicers are recommended.
4. **Soup and vegetables:** The special soup and menus should be adhered to. After initial improvement, usually the patient can go back to work and adjust his lunch to include soup (brought from home in a vacuum bottle), fresh juice a baked potato, fresh mixed salad, and fruit. Much fresh fruit should be eaten during the day.”

*Charlotte Gerson, Appendix I,  
A Cancer Therapy, pp. 398-399.*

**Toxic substances forbidden:** It is extremely important that all types of poisonous substances, in food, air, and water supplies be avoided. This includes fluorides in both drinking water and toothpaste. Other toxic substances such as insect sprays, paint sprays, underarm deodorants, and toxic or pore clogging grooming substances must be avoided.

**Centrifugal juicer permitted:** A centrifugal type juicer may be used, instead of the press type. Juice may be made of a combination of carrots, apples, green leaves, etc., - instead of the carrot-and-apple juice and green-leaf juices made separately.

**Remain on strict medications:** The medications on pp 400-401 of *A Cancer Therapy* have been omitted from the latest editions of this publication, so it would be best to adhere to those in the stricter version of the therapy.

Here are two other statements gleaned from Max Gerson’s comments on treating non-malignant conditions:

Question: “Would not detoxification be advisable in the majority of illnesses? Is this not comparable to what is called “a cleansing program?”

Answer: “We have to detoxify the body in all degenerative diseases, in acute diseases too. But not to the extent as is required in cancer. Even most of the arthritis cases are not so toxic. I found that almost all of the arthritis cases have a weak liver or damaged liver. This is also true of coronary disease.”

*Max Gerson, A Cancer Therapy, p. 415<sup>6</sup>.*

Question: “Can fibroid tumors be dissolved in the same manner?”

Answer: “Fibroid tumors are mostly benign. Benign tumors take 10 to 20 times as much time to absorb as malignant tumors. This goes for adhesions and scars. Fibroid and benign tumors are dissolved only very slowly because they are not abnormal. It is difficult for the parenteral system to bring its digestive powers to bear on these benign tumors. But when they turn malignant, then they are quickly dissolved.”

*Max Gerson, A Cancer Therapy, p. 413<sup>7</sup>.*

## 4.1 Other books by this publisher

### ALTERNATIVE CANCER REMEDIES

#### Facts for Historians and Medical Researchers

- Nearly four hundred preventive factors
- Over fifty cancer treatment methods
- Based on the findings of eighty cancer researchers
- The three primary methods used today
- Over fifty special herbs
- The four leading herbal formulas
- Anti-cancer organizations and clinics
- Sources of supplies

- and much more

8- $\frac{1}{2}$  x 11 - 198 pages

*One copy - \$19.95, plus \$2.50 p&h / Two copies - \$18.00 each, plus \$3.00 p&h In Tennessee, add 9.25% tax*

### NATURAL REMEDIES ENCYCLOPEDIA

---

<sup>6</sup>**Livro:** “A Cancer Therapy - The Cure of Advanced Cancer by Diet Therapy”, **Capítulo 34:** “Atualizações: Appendix I, II and III”, **Item 34.2:** “Appendix II: The cure of advanced cancer by diet therapy - Max Gerson”, **Parágrafo 61.**

<sup>7</sup>**Livro:** “A Cancer Therapy - The Cure of Advanced Cancer by Diet Therapy”, **Capítulo 34:** “Atualizações: Appendix I, II and III”, **Item 34.2:** “Appendix II: The cure of advanced cancer by diet therapy - Max Gerson”, **Parágrafo 45.**

- Topically arranged
- Home remedies for over 500 diseases
- Old fashioned remedies, plus modern nutritional aids

8- $\frac{1}{2}$  x 11 - 483 pages

*One copy - \$16.00, plus \$4.00 p&h In Tennessee, add 9.25% tax*

### WATER THERAPY MANUAL

- Over 100 ways to give simple water treatments
- Step-by-step explanations and diagrams

5- $\frac{1}{2}$  X 8- $\frac{1}{2}$  - 294 pages

*One copy - \$9.95, plus \$2.50 p&h In Tennessee, add 9.25% tax*

### EIGHT LAWS OF HEALTH

- The eight basic principles needed for good health
- Plus inspirational help you will appreciate

8- $\frac{1}{2}$  X 11 - 64 pages

*One copy - \$5.00, plus \$2.50 p&h / Ten copies - \$4.50 each, plus \$6.00 p&h In Tennessee, add 9.25% tax*

## 4.2 Back cover

**If you are not dying from cancer, this book is not for you.**

**Instead, just pass the book on to someone who is in real trouble and who needs it, someone the doctors have given up on.**

**“I see in Gerson one of the most eminent medical geniuses in the history of medicine.”  
-Dr. Albert Schweitzer, the missionary physician to  
Africa, writing about Max Gerson, M.D.**

**NOTIFICATION -**

THE AUTHOR of this book, Vance Ferrell, is not a medical doctor.

THE BOOK is written for the benefit of those dying of cancer.

**THE CONTENT of the book is derived from the lifetime research, practice, discoveries, and writings of a famous medical doctor who successfully saved the lives of countless dying people for decades. WARNING -**

**YOU ARE HEREBY ADVISED that this book consists of a review of a healing method which, although totally developed by a group of medical doctors, may not have been carefully investigated and considered valid by organized medicine.**

**IT IS URGENTLY RECOMMENDED that you consult a physician**, preferably one trained in the Gerson therapy. If not under his care it is not recommended that you treat yourself, although you have a legal right to do so. You are urged to contact the Gerson Institute:

Phone: 619-585-7600 or 619-267-1150. Fax: 619-367-6441. Automated **voice information 24 hrs/day: 1-888-4-GERSON.**